

DOCUMENT RESUME

ED 045 086

JC 710 015

TITLE Hospital-Junior College Survey.
INSTITUTION American Hospital Association, Chicago, Ill.
PUB DATE Jun 70
NOTE 50p.
EDRS PRICE MF-\$0.25 HC-\$2.60
DESCRIPTORS *Clinical Experience, *Curriculum, Field Experience Programs, Health Education, Health Occupations, *Health Occupations Centers, *Health Occupations Education, *Junior Colleges, Teaching Programs

ABSTRACT

The purpose of this survey was to find the extent to which hospitals are working with local junior colleges by providing a hospital clinical setting for the education and training of students in health service occupations. Of the 6030 general hospitals in the United States and Puerto Rico surveyed (excluding those under federal control), 5372 (89 percent) responded. The following information is discussed in this report: (1) which health occupations students are preparing for in hospitals; (2) distribution of curricula for a given occupation among hospitals of various sizes; (3) a. the number of curricula for each occupation found in hospitals of a given size; b. the proportion of that number to the total number of curricula offered within hospitals of a given size; (4) the number of occupations for which junior college students are receiving clinical education in a given hospital; and (5) distribution of hospitals, by size, serving as clinical education sites for one or more occupations. These data can serve as base points for reference to identify patterns and rate of growth or change and can serve as indices for planning the creation or continuation of health occupation curricula. (CA)

ED0 45086

U.S. DEPARTMENT OF HEALTH, EDUCATION
& WELFARE
OFFICE OF EDUCATION
THIS DOCUMENT HAS BEEN REPRODUCED
EXACTLY AS RECEIVED FROM THE PERSON OR
ORGANIZATION ORIGINATING IT. POINTS OF
VIEW OR OPINIONS STATED DO NOT NECES-
SARILY REPRESENT OFFICIAL OFFICE OF EDU-
CATION POSITION OR POLICY.

HOSPITAL-JUNIOR COLLEGE SURVEY

UNIVERSITY OF CALIF.
LOS ANGELES

JAN 25 1971

CLEARINGHOUSE FOR
JUNIOR COLLEGE
INFORMATION



Bureau of Manpower and Education
American Hospital Association
Chicago, Illinois

June, 1970

JC 710 015

CONTENTS

	<u>Page</u>
COMMENTARY ON THE HOSPITAL-JUNIOR COLLEGE SURVEY, 1969	1
 TABLES	
1. Response Rate on the Question 'Is Your Hospital Used for the Clinical Education of Junior College Students?', United States and Puerto Rico	10
2. Number of Hospitals Participating in the Clinical Education of Junior College Students, United States and Puerto Rico, by Hospital Size (Beds)	12
3. When Hospital First Provided its Facilities or Patients for Junior College Student Education	14
3A. When Hospital First Provided its Facilities or Patients for Junior College Student Education, as a Percentage of Hospitals of a Given Size	16
3B. When Hospital First Provided its Facilities or Patients for Junior College Student Education, United States and Puerto Rico	17
4. Health Occupations for which Junior College Students are Preparing in Hospitals, United States and Puerto Rico	19
4A. Health Occupations for which Junior College Students are Preparing in Hospitals, United States and Puerto Rico, by Hospital Size (Beds)	23
4B. Health Occupations for which Junior College Students are Preparing in Hospitals, United States and Puerto Rico, by Hospital Size	42
4C. Health Occupations for which Junior College Students are Preparing in Hospitals, United States and Puerto Rico	43
5. Number of Health Occupations for which Junior College Students are Preparing in a Given Hospital	45
5A. Health Occupations for which Junior College Students are Preparing in a Given Hospital	46
 APPENDIX	
Survey Instrument	48

COMMENTARY ON THE HOSPITAL-JUNIOR COLLEGE SURVEY, 1969

"It should be clearly understood by those responsible for education at all levels that middle-level job education is a legitimate function of higher education, and that the junior college is an appropriate instrument for this purpose. Until such understanding is reached, it will be impossible to move forward rapidly and wisely enough in planning for the future."*

The American Association of Junior Colleges reported in the fall of 1969 that there were 1032 collegiate-level, associate-degree granting institutions. Most frequently referred to as junior colleges or community colleges, these institutions have been opening at the rate of approximately one every other week during the past two years. Along with this rate of growth, there has been a noticeable increase of interest in the development of health occupations curricula within these schools.

With this growth in mind, it was recognized that it would be helpful to identify the extent to which hospitals are currently working with local junior colleges by providing the hospitals' clinical setting for the education and training of students for health service occupations. This identification was accomplished through the use of a simple, one-page survey instrument of 20 items (Appendix). A brief cover letter addressed to hospital administrators informed them of the purpose of the survey. It was accompanied by two additional copies of the questionnaire, with the suggestion that one copy could be forwarded to the state hospital association and another kept for file. The survey instrument was printed

*A National Resource for Occupational Education, statement by the National Advisory Committee on the Junior College, American Association of Junior Colleges, Washington, D.C., 1964, p. 8.

on the back side of the cover letter and was precoded to reduce error in transposing data from the returned questionnaires.

The survey population included all registered general hospitals in the United States and Puerto Rico, except those under federal control. This population includes 6039 hospitals, with 5372 returning completed questionnaires, resulting in a response rate of 89 percent. Questionnaires were returned by all hospitals in the District of Columbia, Nevada, New Hampshire, and Vermont.

As a generalization, about one in four of all registered general hospitals, excepting those under federal control, are used for the clinical education of junior college students (Table 1).

Five states having the largest numbers of hospitals participating in these programs are:

California	235	(48.8%)
New York	121	(38.5%)
Texas	84	(19.1%)
Michigan	72	(38.1%)
Illinois	71	(29.0%)

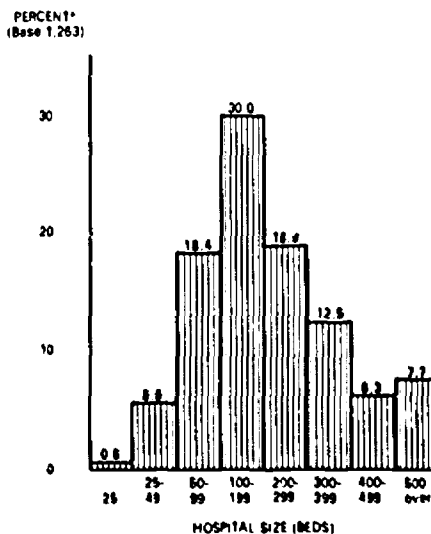
When ranked according to the proportion of hospitals within the state participating in these programs, the top five states are:

California	48.8%	(235)
Washington	47.6%	(49)
Oregon	41.1%	(30)
Florida	41.0%	(59)
Mississippi	40.8%	(31)

This distribution of the 1301 participating hospitals, by size, is reflected in Figure 1.

The eight categories of hospital size range from the smallest, with those of less than 25 beds, to the largest, with those of 500 or more beds. Eight of the hospitals which are used as clinical sites have less than 25 beds; 100 have 500 or more beds (Table 2). Most of them (30 percent) fall within the hospital-size category of 100 to 199 beds.

FIGURE 1
HOSPITALS PARTICIPATING IN THE CLINICAL EDUCATION OF JUNIOR COLLEGE STUDENTS, UNITED STATES AND PUERTO RICO, BY HOSPITAL SIZE (BEDS) EXPRESSED AS PERCENTAGE OF TOTAL, 1969

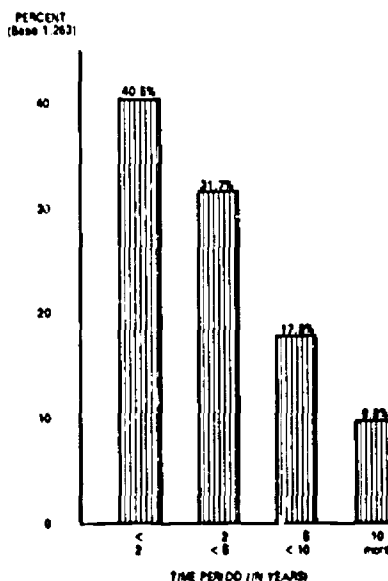


*Of the 1,301 responding hospitals, 28 did not reply to this question.

Hospitals were asked to identify when they first became a clinical site for the education of junior college students (Table 3B). The responses show a greatly accelerated rate of growth in the number of hospitals serving as clinical sites during the two year period of 1967-1969. Forty percent of the participating hospitals became clinical sites in that period. Almost three out of every four hospitals had become a clinical site within the past five years, while about one in ten had served in this capacity for ten or more years (Figure 2). The states having the largest number of hospitals participating for ten or more

years are California (40), Michigan (14), Washington (11), Texas (10), and New York (5). Within the past two years the greater number of hospitals becoming clinical education sites were in New York (50), California (46), Illinois (42), Texas (33), and Massachusetts (26).

FIGURE 2
WHEN HOSPITAL WAS FIRST USED FOR CLINICAL EDUCATION OF JUNIOR COLLEGE STUDENTS, AS A PERCENTAGE OF HOSPITALS RESPONDING TO QUESTION, 1969

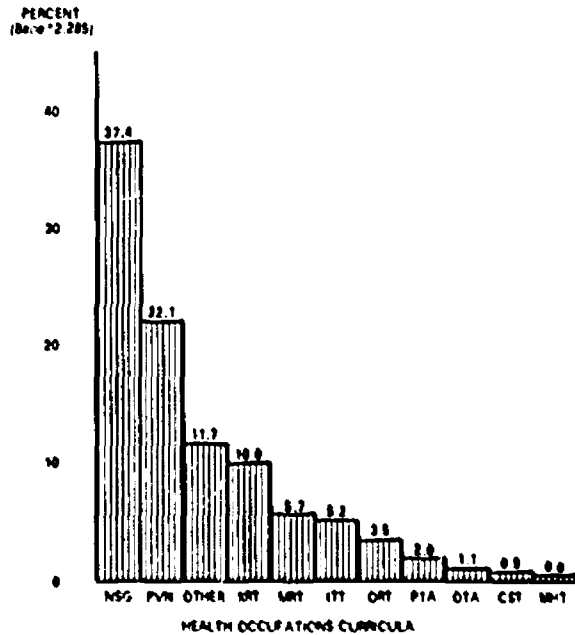


At the time of reporting, hospitals served as the clinical sites for 2285 health occupations curricula (Table 4). Almost 60 percent of the curricula are for associate degree or practical/vocational nursing. As identified in Figure 3, the curricula were reported in the following order of frequency:

Nursing (Associate Degree)	37.4 %
Practical or Vocational Nursing	22.1
Other	11.7
Xray or Radiological Technology	10.0

Medical Record Technology	5.7 %
Inhalation Therapy Technology	5.2
Operating Room Technology	3.5
Physical Therapy Assisting	2.0
Occupational Therapy Assisting	1.1
Central Supply Technology	0.9
Mental Health Technology	0.6

FIGURE 3
JUNIOR COLLEGE HEALTH OCCUPATIONS
CURRICULA IN HOSPITALS,
UNITED STATES AND PUERTO RICO, 1960



* Twelve of the reporting hospitals did not answer this question.

On the premise that there will be continued growth in the use of hospitals as clinical sites for junior college programs, the data were viewed in a variety of ways. The data will serve as base points of

reference from which to identify patterns and rates of growth or change in the collaborative efforts of junior colleges and hospitals in the education of health manpower. They may serve also as helpful indices for those planning the creation or continuation of health occupations curricula.

The health occupations for which junior college students are preparing in hospitals are identified in Table 4A by state, showing the number of curricula for each occupation that are found within the eight categories of hospital size. The data suggest:

That hospitals of less than 50 beds are involved much less frequently than are larger hospitals in junior college health occupations education programs.

That hospitals of 100 to 200 beds are more commonly involved with junior colleges as the clinical site for their health occupations students than are hospitals in other size categories.

The distribution of curricula for a given occupation among hospitals of various sizes is reflected in Table 4B. The data indicate that:

Fifty-six percent of the hospitals participating in practical/vocational nurse education are of 50 to 100 beds.

Fifty-four percent of the hospitals participating in associate degree nursing education are of 100 to 300 beds.

Fifty-five percent of the medical records technology curricula are found in hospitals of 100 to 300 beds.

Half of the hospitals with a junior college radiologic technology curriculum are 100 to 300 beds in size.

Sixty-two percent of the curricula for inhalation therapy are found in hospitals having 300 or more beds.

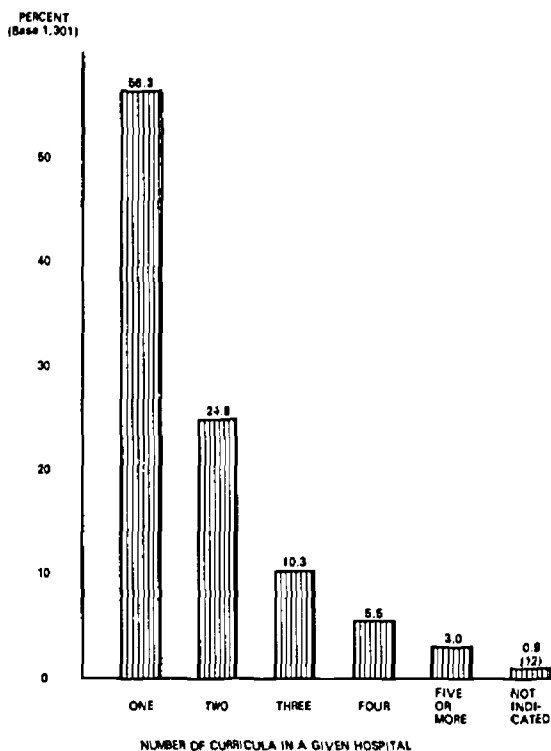
Half of the curricula for occupational therapy assisting are found in hospitals of 400 or more beds.

Table 4C identifies the number of curricula for each occupation that are found in hospitals of a given size and the proportion of that number to the total number of curricula offered within hospitals of a given size. That is, the 271 associate degree nursing curricula found in hospitals of 100-199 beds comprise 42.3 percent of all of the junior college health occupations curricula found in hospitals of this size.

Approximately one out of every four participating hospitals provides its clinical facilities or patients for educational programs relating to two

occupational fields. About one out of ten of the hospitals participate in three occupational curricula; about one hospital in twenty participates in four different curricula; and one in thirty-three participate in five different curricula (Figure 4).

FIGURE 4
PERCENTAGE OF REPORTING HOSPITALS PROVIDING CLINICAL RESOURCES
FOR ONE OR MORE JUNIOR COLLEGE CURRICULA, 1969



The number of occupations for which junior college students are receiving clinical education in a given hospital are identified in Table 5. The Table also states this number as a percentage of the total number of hospitals of a given size. For example, among the 162 hospitals of 300-399

beds, 48 of them (29.6 percent) participate in curricula for two occupational fields; and four of them (2.5 percent) participate in curricula for five or more health occupations.

Table 5A describes by hospital size the distribution of hospitals serving as the clinical education site for one or more occupations. The distribution suggests that the larger the hospital, the more likely it is to be used as the clinical education site for a larger number of occupational fields.

TABLE 1. RESPONSE RATE ON THE QUESTION "IS YOUR HOSPITAL USED FOR THE CLINICAL EDUCATION OF JUNIOR COLLEGE STUDENTS?"
UNITED STATES AND PUERTO RICO

	HOSPITALS RECEIVING QUESTIONNAIRE	TOTAL RESPONSES		"YES" RESPONSES	
		NUMBER	PERCENT	NUMBER	PERCENT OF TOTAL
UNITED STATES AND PUERTO RICO	6,039	5,372	89.0	1,301	24.2
ALABAMA	120	110	91.7	14	12.7
ALASKA	14	13	92.9	0	0
ARIZONA	56	51	91.1	18	35.3
ARKANSAS	85	73	85.9	7	9.6
CALIFORNIA	546	482	88.3	235	48.8
COLORADO	76	72	94.7	12	16.7
CONNECTICUT	47	38	80.9	10	26.3
DELAWARE	9	6	66.7	2	33.3
DISTRICT OF COLUMBIA	13	13	100.0	4	30.8
FLORIDA	153	144	94.1	59	41.0
GEORGIA	136	116	85.3	13	11.2
HAWAII	27	20	74.1	4	20.0
IDAH0	49	47	95.9	11	23.4
ILLINOIS	260	245	94.2	71	29.0
INDIANA	115	105	91.3	17	16.2
IOWA	135	124	91.9	30	24.2
KANSAS	148	140	94.6	18	12.9
KENTUCKY	109	97	89.0	23	23.7
LOUISIANA	136	107	78.7	7	6.5
MAINE	49	45	91.8	4	8.9
MARYLAND	52	44	84.6	17	38.6
MASSACHUSETTS	156	129	82.7	43	33.3
MICHIGAN	207	189	91.3	72	38.1
MINNESOTA	184	171	92.9	25	14.6
MISSISSIPPI	95	76	80.0	31	40.8
MISSOURI	123	111	90.2	35	31.5
MONTANA	56	48	85.7	4	8.3
NEBRASKA	104	95	91.3	3	3.2
NEVADA	17	17	100.0	0	0
NEW HAMPSHIRE	32	32	100.0	3	9.4

HOSPITAL-JUNIOR COLLEGE SURVEY, 1969
AMERICAN HOSPITAL ASSOCIATION

TABLE 1. RESPONSE RATE ON THE QUESTION "IS YOUR HOSPITAL USED FOR THE CLINICAL EDUCATION OF JUNIOR COLLEGE STUDENTS?"
UNITED STATES AND PUERTO RICO

	HOSPITALS RECEIVING QUESTIONNAIRE		TOTAL RESPONSES		"YES" RESPONSES	
	NUMBER	PERCENT	NUMBER	PERCENT	NUMBER	PERCENT OF TOTAL
NEW JERSEY	116	84.5	98	84.5	35	35.7
NEW MEXICO	42	88.1	37	88.1	9	24.3
NEW YORK	364	86.3	314	86.3	121	38.5
NORTH CAROLINA	140	88.6	124	88.6	24	19.4
NORTH DAKOTA	59	89.8	53	89.8	3	5.7
OHIO	198	91.4	181	91.4	28	15.5
OKLAHOMA	126	91.3	115	91.3	7	6.1
OREGON	78	93.6	73	93.6	30	41.1
PENNSYLVANIA	252	90.5	228	90.5	36	15.8
RHODE ISLAND	17	88.2	15	88.2	6	40.0
SOUTH CAROLINA	71	90.1	64	90.1	5	7.8
SOUTH DAKOTA	49	87.8	43	87.8	2	4.7
TENNESSEE	138	77.5	107	77.5	13	12.1
TEXAS	494	89.1	440	89.1	84	19.1
UTAH	33	90.9	30	90.9	4	13.3
VERMONT	20	100.0	20	100.0	2	10.0
VIRGINIA	103	89.3	92	89.3	13	14.1
WASHINGTON	106	97.2	103	97.2	49	47.6
WEST VIRGINIA	77	81.8	63	81.8	8	12.7
WISCONSIN	166	92.2	153	92.2	13	8.5
WYOMING	28	89.3	25	89.3	3	12.0
PUERTO RICO	48	60.4	29	60.4	11	37.9

HOSPITAL-JUNIOR COLLEGE SURVEY, 1969
AMERICAN HOSPITAL ASSOCIATION

TABLE 2. NUMBER OF HOSPITALS PARTICIPATING IN THE CLINICAL EDUCATION OF JUNIOR COLLEGE STUDENTS
UNITED STATES AND PUERTO RICO BY HOSPITAL SIZE (BEDS)

	TOTAL HOSPITALS RESPONDING	HOSPITAL SIZE (BEDS)										500 AND OVER
		LESS THAN 25	25 TO 49	50 TO 99	100 TO 199	200 TO 299	300 TO 399	400 TO 499	500 AND OVER			
UNITED STATES AND PUERTO RICO	1,301	8	73	239	391	246	162	82	100			
ALABAMA	14	0	1	3	6	1	2	1	0			
ALASKA	0	0	0	0	0	0	0	0	0			
ARIZONA	18	0	1	4	8	0	2	2	1			
ARKANSAS	7	0	1	2	2	2	0	0	0			
CALIFORNIA	235	1	22	64	69	43	18	9	9			
COLORADO	12	0	1	2	1	3	2	2	1			
CONNECTICUT	10	0	0	0	2	1	2	2	3			
DELAWARE	2	0	0	0	1	0	0	0	1			
DISTRICT OF COLUMBIA	4	0	0	0	0	0	3	0	1			
FLORIDA	55	0	3	5	19	17	6	4	5			
GEORGIA	13	0	0	1	5	3	3	1	0			
HAWAII	4	0	0	1	1	1	0	1	0			
IDAHO	11	1	1	1	8	0	0	0	0			
ILLINOIS	71	0	0	12	19	18	9	3	10			
INDIANA	17	0	0	2	5	4	3	2	1			
IOWA	30	0	4	6	7	7	4	1	1			
KANSAS	18	0	1	9	6	0	0	1	1			
KENTUCKY	23	0	0	4	10	4	5	0	0			
LOUISIANA	7	0	0	2	2	1	2	0	0			
MAINE	4	0	0	2	0	1	1	0	0			
MARYLAND	17	0	0	1	3	4	3	4	2			
MASSACHUSETTS	43	0	1	5	13	10	9	2	3			
MICHIGAN	72	0	1	9	29	12	8	6	7			
MINNESOTA	25	0	4	1	4	4	6	3	3			
MISSISSIPPI	31	1	1	7	17	2	3	0	0			
MISSOURI	35	0	2	6	8	4	8	0	7			
MONTANA	4	0	1	0	2	1	0	0	0			
NEBRASKA	3	0	0	1	2	0	0	0	0			
NEVADA	0	0	0	0	0	0	0	0	0			
NEW HAMPSHIRE	3	0	0	2	0	0	1	0	0			

HOSPITAL-JUNIOR COLLEGE SURVEY, 1969
AMERICAN HOSPITAL ASSOCIATION

TABLE 2. NUMBER OF HOSPITALS PARTICIPATING IN THE CLINICAL EDUCATION OF JUNIOR COLLEGE STUDENTS
UNITED STATES AND PUERTO RICO BY HOSPITAL SIZE (BEDS)

	TOTAL HOSPITALS RESPONDING	HOSPITAL SIZE (BEDS)										500 AND OVER
		LESS THAN 25	25 TO 49	50 TO 99	100 TO 199	200 TO 299	300 TO 399	400 TO 499	500 AND OVER			
NEW JERSEY	35	0	0	2	12	9	7	4	1			
NEW MEXICO	9	1	1	2	3	2	0	0	0			
NEW YORK	121	0	2	16	37	27	20	8	11			
NORTH CAROLINA	24	0	0	3	12	5	1	1	2			
NORTH DAKOTA	3	0	0	1	2	0	0	0	0			
OHIO	28	0	0	4	4	6	6	4	4			
OKLAHOMA	7	0	4	1	1	1	0	0	0			
OREGON	30	0	3	10	10	1	3	2	1			
PENNSYLVANIA	36	0	0	1	6	11	5	5	8			
RHODE ISLAND	6	0	0	0	1	4	0	0	1			
SOUTH CAROLINA	5	0	0	0	0	0	2	2	1			
SOUTH DAKOTA	2	0	0	0	0	2	0	0	0			
TENNESSEE	13	0	0	1	3	3	1	1	4			
TEXAS	84	2	12	21	23	10	3	5	8			
UTAH	4	0	1	1	0	1	1	0	0			
VERMONT	2	0	0	0	1	1	0	0	0			
VIRGINIA	13	0	1	0	4	2	4	1	1			
WASHINGTON	49	2	4	17	15	7	2	2	0			
WEST VIRGINIA	8	0	0	1	1	4	1	1	0			
WISCONSIN	13	0	0	1	1	4	4	2	1			
WYOMING	3	0	0	1	1	0	1	1	0			
PUERTO RICO	11	0	0	3	3	3	1	0	1			

TABLE 3. WHEN HOSPITAL FIRST PROVIDED ITS FACILITIES OR PATIENTS FOR JUNIOR COLLEGE STUDENT EDUCATION

	TOTAL HOSPITALS RESPONDING		HOSPITAL SIZE (BEDS)							
	#	%	LESS THAN 25		25 TO 49		50 TO 99		100 TO 199	
			#	%	#	%	#	%	#	%
TOTAL	1,263	100.0	8	.6	68	5.4	226	17.9	382	30.2
WITHIN THE PAST 2 YEARS	512	100.0	5	1.0	31	6.1	103	20.1	142	27.7
OVER 2 YEARS AGO, BUT LESS THAN 5	400	100.0	2	.5	20	5.0	75	18.8	133	33.2
OVER 5 YEARS AGO, BUT LESS THAN 10	226	100.0	0	0	13	5.8	37	16.4	77	34.1
10 OR MORE YEARS AGO	125	100.0	1	.8	4	3.2	11	8.8	30	24.0

HOSPITAL-JUNIOR COLLEGE SURVEY, 1969
 AMERICAN HOSPITAL ASSOCIATION

TABLE 3. WHEN HOSPITAL FIRST PROVIDED ITS FACILITIES OR PATIENTS FOR JUNIOR COLLEGE STUDENT EDUCATION

	HOSPITAL SIZE (BEDS)							
	200 TO 299		300 TO 399		400 TO 499		500 AND OVER	
	#	%	#	%	#	%	#	%
TOTAL	243	19.2	157	12.4	81	6.4	98	7.8
WITHIN THE PAST 2 YEARS	92	18.0	60	11.7	35	6.8	44	8.6
OVER 2 YEARS AGO, BUT LESS THAN 5	70	17.5	55	13.7	19	4.7	26	6.5
OVER 5 YEARS AGO, BUT LESS THAN 10	51	22.6	21	9.3	15	6.6	12	5.3
10 OR MORE YEARS AGO	30	24.0	21	16.8	12	9.6	16	12.8

TABLE 3A. WHEN HOSPITAL FIRST PROVIDED ITS FACILITIES OR PATIENTS FOR JUNIOR COLLEGE STUDENT EDUCATION
 AS A PERCENTAGE OF HOSPITALS OF A GIVEN SIZE

HOSPITAL SIZE	TIME PERIOD (IN YEARS)				TOTAL HOSPITALS
	LESS THAN 2 %	BETWEEN 2 AND 5 %	BETWEEN 5 AND 10 %	10 OR MORE %	
LESS THAN 25 BEDS	62.5	25.0	0	12.5	8
25 TO 49	45.6	29.4	19.1	5.9	68
50 TO 99	45.6	33.2	16.4	4.9	226
100 TO 199	37.2	34.8	20.2	7.9	382
200 TO 299	37.9	28.8	21.0	12.3	243
300 TO 399	38.2	35.0	13.4	13.4	157
400 TO 499	43.2	23.5	18.5	14.8	81
500 OR MORE	44.9	26.5	12.2	16.3	98
TOTAL	40.5	31.7	17.9	9.9	1,263

TABLE 36. WHEN HOSPITAL FIRST PROVIDED ITS FACILITIES OR PATIENTS FOR JUNIOR COLLEGE STUDENT EDUCATION
UNITED STATES AND PUERTO RICO

	TIME PERIOD (IN YEARS)										TOTAL (EQUALS 100% OF RESPONSES)	NC RESPONSE
	LESS THAN 2		2 TO 4-9		5 TO 9-9		10 OR MORE		#	#		
	#	%	#	%	#	%	#	%				
UNITED STATES AND PUERTO RICO	512	40.5	400	31.7	226	17.9	125	9.9	1,263	38		
ALABAMA	11	78.6	1	7.1	2	14.3	0	0	14	0		
ALASKA	0	0	0	0	0	0	0	0	0	0		
ARIZONA	10	55.6	6	33.3	2	11.1	0	0	18	0		
ARKANSAS	4	57.1	0	0	2	28.6	1	14.3	7	0		
CALIFORNIA	46	19.9	72	31.2	73	31.6	40	17.3	231	4		
COLORADO	8	72.7	0	0	2	18.2	1	9.1	11	1		
CONNECTICUT	5	50.0	4	40.0	1	10.0	0	0	10	0		
DELAWARE	1	50.0	1	50.0	0	0	0	0	2	0		
DISTRICT OF COLUMBIA	2	50.0	0	0	2	50.0	0	0	4	0		
FLORIDA	18	30.5	25	42.4	13	22.0	3	5.1	59	0		
GEORGIA	11	84.6	1	7.7	0	0	1	7.7	13	0		
HAWAII	2	50.0	2	50.0	0	0	0	0	4	0		
IDAH0	3	27.3	4	36.4	1	9.1	3	27.3	11	0		
ILLINOIS	42	61.8	18	26.5	4	5.9	4	5.9	68	3		
INDIANA	7	43.8	5	31.3	0	0	4	25.0	16	1		
IOWA	12	46.4	10	37.0	5	18.5	0	0	27	3		
KANSAS	4	26.7	9	60.0	1	6.7	1	6.7	15	3		
KENTUCKY	10	43.5	9	39.1	3	13.0	1	4.3	23	0		
LOUISIANA	3	42.9	2	28.6	1	14.3	1	14.3	7	0		
MAINE	0	0	3	75.0	1	25.0	0	0	4	0		
MARYLAND	10	58.8	7	41.2	0	0	0	0	17	0		
MASSACHUSETTS	26	60.5	12	27.9	4	9.3	1	2.3	43	0		
MICHIGAN	20	29.0	21	30.4	14	20.3	14	20.3	69	3		
MINNESOTA	16	66.7	6	25.0	2	8.3	0	0	24	1		
MISSISSIPPI	9	30.0	14	46.7	6	20.0	1	3.3	30	1		
MISSOURI	20	58.8	9	26.5	4	11.8	1	2.9	34	1		
MONTANA	1	25.0	2	50.0	0	0	1	25.0	4	0		
NEBRASKA	2	66.7	0	0	0	0	1	33.3	3	0		
NEVADA	0	0	0	0	0	0	0	0	0	0		
NEW HAMPSHIRE	2	100.0	0	0	0	0	0	0	2	1		

HOSPITAL-JUNIOR COLLEGE SURVEY, 1969
 AMERICAN HOSPITAL ASSOCIATION

TABLE 38. WHEN HOSPITAL FIRST PROVIDED ITS FACILITIES OR PATIENTS FOR JUNIOR COLLEGE STUDENT EDUCATION
 UNITED STATES AND PUERTO RICO

TIME PERIOD (IN YEARS)

	LESS THAN 2		2 TO 4-9		5 TO 9-9		10 OR MORE		TOTAL (EQUALS 100% OF RESPONSES)		NO RESPONSE	
	#	%	#	%	#	%	#	%	#	%	#	%
NEW JERSEY	19	55.9	14	41.2	1	2.9	0	0	34		1	1
NEW MEXICO	4	44.4	3	33.3	1	11.1	1	11.1	9		0	0
NEW YORK	50	42.0	49	41.2	15	12.6	5	4.2	119		2	2
NORTH CAROLINA	4	16.7	14	58.3	4	16.7	2	8.3	24		0	0
NORTH DAKOTA	1	33.3	0	0	2	66.7	0	0	3		0	0
OHIO	12	46.2	10	38.5	3	11.5	1	3.8	26		2	2
OKLAHOMA	2	33.3	3	50.0	1	16.7	0	0	6		1	1
OREGON	14	48.3	8	27.6	3	10.3	4	13.8	29		1	1
PENNSYLVANIA	18	51.4	8	22.9	6	17.1	3	8.6	35		1	1
RHODE ISLAND	4	66.7	1	16.7	1	16.7	0	0	6		0	0
SOUTH CAROLINA	1	20.0	2	40.0	1	20.0	1	20.0	5		0	0
SOUTH DAKOTA	0	0	1	50.0	0	0	1	50.0	2		0	0
TENNESSEE	1	33.3	1	33.3	0	0	1	33.3	3		1	1
TEXAS	33	40.7	16	19.8	22	27.2	10	12.3	81		3	3
UTAH	1	33.3	1	33.3	0	0	1	33.3	3		1	1
VERMONT	0	0	0	0	2	100.0	0	0	2		0	0
VIRGINIA	7	53.8	4	30.8	2	15.4	0	0	13		0	0
WASHINGTON	10	20.8	15	31.3	12	25.0	11	22.9	48		1	1
WEST VIRGINIA	4	50.0	2	25.0	2	25.0	0	0	8		0	0
WISCONSIN	5	41.7	2	16.7	1	8.3	4	33.3	12		1	1
WYOMING	2	66.7	0	0	0	0	1	33.3	3		0	0
PUERTO RICO	7	70.0	1	10.0	2	20.0	0	0	10		1	1



TABLE 4. HEALTH OCCUPATIONS FOR WHICH JUNIOR COLLEGE STUDENTS ARE PREPARING IN HOSPITALS
UNITED STATES AND PUERTO RICO

	CST			IIT			MRT			MHT			NSG			OTA		
	#	%	Z	#	%	Z	#	%	Z	#	%	Z	#	%	Z	#	%	Z
UNITEO STATES AND PUERTO RICO	20	.9		118	5.2		131	5.7		13	-6		854	37.4		24	1.1	
ALABAMA	0	0		0	0		1	4.0		1	4.0		10	40.0		0	0	
ALASKA	0	0		0	0		0	0		0	0		0	0		0	0	
ARIZONA	0	0		3	8.3		6	16.7		0	0		14	38.9		0	0	
ARKANSAS	0	0		0	0		0	0		0	0		6	66.7		0	0	
CALIFORNIA	4	-9		21	4.6		15	3.3		2	-4		149	32.9		2	-4	
COLORADO	0	0		2	10.5		1	5.3		0	0		4	21.1		0	0	
CONNECTICUT	0	0		3	15.8		1	5.3		0	0		3	15.8		1	5.3	
DELAWARE	0	0		0	0		0	0		0	0		2	66.7		0	0	
DIST. OF COLUMBIA	0	0		1	16.7		0	0		0	0		4	66.7		0	0	
FLORIDA	2	1.6		10	7.9		12	9.5		2	1.4		48	38.1		1	-8	
GEORGIA	0	0		0	0		0	0		0	0		13	81.3		0	0	
HAWAII	0	0		0	0		0	0		0	0		3	42.9		0	0	
IDAHO	1	4.3		1	4.3		3	13.0		0	0		7	30.4		0	0	
ILL.INDIS	0	0		9	7.3		3	2.4		0	0		50	40.3		1	-8	
INDIANA	0	0		0	0		0	0		0	0		13	48.1		0	0	
IOWA	1	2.1		0	0		2	4.3		0	0		5	10.6		1	2.1	
KANSAS	0	0		1	3.8		3	11.5		0	0		9	34.6		1	3.8	
KENTUCKY	0	0		1	3.3		0	0		0	0		21	70.0		0	0	
LOUISIANA	0	0		1	7.7		0	0		0	0		5	38.5		0	0	
MAINE	0	0		0	0		1	16.7		0	0		2	33.3		0	0	
MARYLAND	0	0		2	8.0		3	12.0		0	0		13	52.0		0	0	
MASSACHUSETTS	0	0		3	3.9		5	6.5		1	1.3		31	40.3		1	1.3	
MICHIGAN	0	0		6	4.8		3	2.4		1	.8		36	28.8		1	.8	
MINNESOTA	0	0		3	5.9		3	5.9		1	2.0		14	27.5		7	13.7	
MISSISSIPPI	0	0		2	3.8		0	0		0	0		20	37.7		0	0	
MISSOURI	0	0		5	9.3		1	1.9		0	0		23	42.6		0	0	
MONTANA	0	0		0	0		0	0		0	0		4	80.0		0	0	
NEBRASKA	0	0		1	16.7		0	0		0	0		1	16.7		0	0	
NEVADA	0	0		0	0		0	0		0	0		0	0		0	0	
NEW HAMPSHIRE	0	0		0	0		1	25.0		0	0		0	0		0	0	

TABLE 4 - HEALTH OCCUPATIONS FOR WHICH JUNIOR COLLEGE STUDENTS ARE PREPARING IN HOSPITALS
 UNITED STATES AND PUERTO RICO
 HOSPITAL-JUNIOR COLLEGE SURVEY, 1969
 AMERICAN HOSPITAL ASSOCIATION

	CST		EET		MRT		MHT		NSG		GTA	
	#	%	#	%	#	%	#	%	#	%	#	%
NEW JERSEY	1	2.0	3	5.9	4	7.8	0	0	31	60.7	0	0
NEW MEXICO	0	0	0	0	0	0	0	0	3	27.1	0	0
NEW YORK	0	0	9	4.3	19	9.1	0	0	95	45.5	1	.5
NORTH CAROLINA	0	0	0	0	1	2.9	0	0	14	41.2	0	0
NORTH DAKOTA	0	0	0	0	0	0	0	0	2	66.7	0	0
OHIO	0	0	1	2.2	1	2.2	0	0	24	52.2	1	2.2
OKLAHOMA	0	0	0	0	0	0	0	0	2	33.3	0	0
OREGON	0	0	2	4.1	5	10.2	1	2.0	16	32.7	1	2.0
PENNSYLVANIA	0	0	1	1.9	9	17.3	1	1.9	16	30.8	0	0
RHODE ISLAND	0	0	0	0	1	8.3	0	0	3	25.0	0	0
SOUTH CAROLINA	1	4.8	3	14.3	2	9.5	2	9.5	4	19.0	1	4.8
SOUTH DAKOTA	0	0	0	0	1	33.3	0	0	1	33.3	0	0
TENNESSEE	0	0	0	0	0	0	0	0	1	16.7	0	0
TEXAS	8	4.5	15	8.5	8	4.5	1	.6	59	33.5	3	1.7
UTAH	0	0	0	0	0	0	0	0	1	16.7	0	0
VERMONT	0	0	0	0	0	0	0	0	2	100.0	0	0
VIRGINIA	0	0	0	0	1	6.3	0	0	9	56.3	0	0
WASHINGTON	2	2.2	7	7.7	9	9.9	0	0	27	29.7	0	0
WEST VIRGINIA	0	0	0	0	1	8.3	0	0	7	56.3	0	0
WISCONSIN	0	0	1	4.8	0	0	0	0	4	19.0	1	4.8
WYOMING	0	0	0	0	1	14.3	0	0	1	14.3	0	0
PUERTO RICO	0	0	0	0	2	11.1	0	0	10	55.6	0	0

HOSPITAL-JUNIOR COLLEGE SURVEY, 1969
AMERICAN HOSPITAL ASSOCIATION

TABLE 4. HEALTH OCCUPATIONS FOR WHICH JUNIOR COLLEGE STUDENTS ARE PREPARING IN HOSPITALS
UNITED STATES AND PUERTO RICO

	ORT			PTA			PVN			XRT			OTHER			TOTAL
	#	%	Z	#	%	Z	#	%	Z	#	%	Z	#	%	Z	#
UNITED STATES AND PUERTO RICO	79	3-5		46	2-0		504	22-1		228	10-0		268	11-7		2,285
ALABAMA	0	0		0	0		3	12-0		4	16-0		6	24-0		25
ALASKA	0	0		0	0		0	0		0	0		0	0		0
ARIZONA	1	2-8		2	5-6		8	22-2		2	5-6		0	0		36
ARKANSAS	0	0		0	0		3	33-3		0	0		0	0		9
CALIFORNIA	12	2-6		4	-9		158	34-9		55	12-1		31	6-8		453
COLORADO	0	0		0	0		5	26-3		2	10-5		5	26-3		19
CONNECTICUT	2	10-5		0	0		1	5-3		2	10-5		6	31-6		19
DELAWARE	0	0		0	0		0	0		0	0		1	33-3		3
DIST. OF COLUMBIA	0	0		0	0		0	0		0	0		1	16-7		6
FLORIDA	10	7-9		4	3-2		17	13-5		8	6-3		12	9-5		126
GEORGIA	0	0		0	0		1	6-3		1	6-3		1	6-3		16
HAWAII	0	0		0	0		4	57-1		0	0		0	0		7
IDAHO	1	4-3		0	0		7	30-4		2	8-7		1	4-3		23
ILLINOIS	7	5-6		3	2-4		27	21-8		14	11-3		10	8-1		124
INDIANA	0	0		0	0		5	18-5		5	18-5		4	14-8		27
IOWA	8	17-0		0	0		19	40-4		2	4-3		9	19-1		47
KANSAS	0	0		1	3-8		4	15-4		3	11-5		4	17-4		26
KENTUCKY	1	3-3		0	0		2	6-7		1	3-3		4	13-3		30
LOUISIANA	0	0		1	7-7		3	23-1		2	15-4		1	7-7		13
MAINE	0	0		0	0		1	16-7		0	0		2	32-3		6
MARYLAND	1	4-0		0	0		0	0		3	12-0		3	12-0		25
MASSACHUSETTS	5	6-5		7	9-1		7	9-1		10	13-0		7	9-1		77
MICHIGAN	2	1-6		0	0		40	32-0		18	14-4		18	14-4		125
MINNESOTA	0	0		8	15-7		6	11-8		2	3-9		7	13-7		51
MISSISSIPPI	3	5-7		0	0		18	34-0		5	9-4		5	9-4		53
MISSOURI	1	1-9		3	5-6		8	14-8		5	5-3		8	14-8		54
MONTANA	0	0		0	0		0	20-0		0	0		0	0		5
NEBRASKA	0	0		1	16-7		1	16-7		0	0		2	33-3		6
NEVADA	0	0		0	0		0	0		0	0		0	0		0
NEW HAMPSHIRE	0	0		0	0		1	25-0		0	0		2	50-0		4

HOSPITAL-JUNIOR COLLEGE SURVEY, 1969
 AMERICAN HOSPITAL ASSOCIATION

TABLE 4. HEALTH OCCUPATIONS FOR WHICH JUNIOR COLLEGE STUDENTS ARE PREPARING IN HOSPITALS
 UNITED STATES AND PUERTO RICO

	DRT		PTA		PVT		XRT		OTHER		TOTAL #
	#	%	#	%	#	%	#	%	#	%	
NEW JERSEY	1	2.0	1	2.0	2	3.9	2	3.9	6	11.8	51
NEW MEXICO	0	0	0	0	4	36.4	0	0	4	36.4	11
NEW YORK	4	1.9	4	1.9	16	7.7	30	14.4	31	14.8	209
NORTH CAROLINA	0	0	1	2.9	11	32.4	1	2.9	6	17.6	34
NORTH DAKOTA	0	0	0	0	1	33.3	0	0	0	0	3
OHIO	2	4.3	0	0	4	8.7	6	13.0	7	15.2	46
OKLAHOMA	0	0	0	0	0	0	1	16.7	3	50.0	6
OREGON	0	0	0	0	15	30.6	3	6.1	6	12.2	49
PENNSYLVANIA	4	7.7	0	0	6	11.5	2	3.8	13	25.0	52
RHODE ISLAND	0	0	0	0	2	16.7	2	16.7	4	33.3	12
SOUTH CAROLINA	2	9.5	2	9.5	1	4.8	2	9.5	1	4.8	21
SOUTH DAKOTA	0	0	0	0	0	0	0	0	1	33.3	3
TENNESSEE	0	0	0	0	3	50.0	1	16.7	1	16.7	6
TEXAS	8	4.5	3	1.7	43	24.4	14	8.0	14	8.0	176
UTAH	0	0	0	0	3	50.0	1	16.7	1	16.7	6
VERMONT	0	0	0	0	0	0	0	0	0	0	2
VIRGINIA	0	0	0	0	2	12.5	3	18.8	1	6.3	16
WASHINGTON	1	1.1	0	0	27	29.7	7	7.7	11	12.1	91
WEST VIRGINIA	0	0	0	0	3	25.0	0	0	1	8.3	12
WISCONSIN	1	4.8	1	4.8	7	33.3	2	9.5	4	19.0	21
WYOMING	1	14.3	0	0	2	28.6	1	14.3	1	14.3	7
PUERTO RICO	1	5.6	0	0	3	16.7	2	11.1	0	0	18

HOSPITAL-JUNIOR COLLEGE SURVEY, 1969
AMERICAN HOSPITAL ASSOCIATION

TABLE 4A. HEALTH OCCUPATIONS FOR WHICH JUNIOR COLLEGE STUDENTS ARE PREPARING IN HOSPITALS
UNITED STATES AND PUERTO RICO, BY HOSPITAL SIZE (BEDS)

HOSPITAL SIZE (BEDS)	OCCUPATIONS											TOTAL	NOT INDICATED
	CST	ITV	MRT	MWT	NSC	OTA	ORT	PTA	PVN	MRT	OTHER		
U.S. TOTAL	20	118	131	13	854	24	79	46	504	228	268	2,285	12
LESS THAN 25	0	0	1	0	4	0	0	0	3	1	1	10	0
25 TO 49	3	3	3	2	26	1	5	2	34	5	14	98	4
50 TO 99	3	6	13	0	111	4	6	4	122	22	48	339	3
100 TO 199	6	18	40	4	271	2	13	9	158	55	64	640	3
200 TO 299	2	18	32	1	188	3	21	10	87	58	50	470	1
300 TO 399	1	26	16	1	122	2	14	9	48	35	37	311	0
400 TO 499	3	18	13	2	63	6	5	5	24	27	27	193	0
500 OR MORE	2	29	13	3	69	6	15	7	28	25	27	224	1

HOSPITAL-JUNIOR COLLEGE SURVEY, 1969
 AMERICAN HOSPITAL ASSOCIATION
 TABLE 4A. HEALTH OCCUPATIONS FOR WHICH JUNIOR COLLEGE STUDENTS ARE PREPARING IN HOSPITALS
 UNITED STATES AND PUERTO RICO, BY HOSPITAL SIZE (BEDS)

HOSPITAL SIZE (BEDS)	OCCUPATIONS											TOTAL	NOT INDICATED
	CST	ETT	MR7	MMT	NSC	OTA	QRT	PTA	PVN	XRT	OTHER		
ALABAMA	0	0	1	1	10	0	0	0	3	4	6	25	0
LESS THAN 25	0	0	0	0	0	0	0	0	0	0	0	0	0
25 TO 49	0	0	0	0	1	0	0	0	0	0	0	1	0
50 TO 99	0	0	0	0	2	0	0	0	1	0	1	4	0
100 TO 199	0	0	1	1	4	0	0	0	1	2	4	13	0
200 TO 299	0	0	0	0	1	0	0	0	0	0	0	1	0
300 TO 399	0	0	0	0	1	0	0	0	1	2	1	5	0
400 TO 499	0	0	0	0	1	0	0	0	0	0	0	1	0
500 OR MORE	0	0	0	0	0	0	0	0	0	0	0	0	0
ALASKA	0	0	0	0	0	0	0	0	0	0	0	0	0
LESS THAN 25	0	0	0	0	0	0	0	0	0	0	0	0	0
25 TO 49	0	0	0	0	0	0	0	0	0	0	0	0	0
50 TO 99	0	0	0	0	0	0	0	0	0	0	0	0	0
100 TO 199	0	0	0	0	0	0	0	0	0	0	0	0	0
200 TO 299	0	0	0	0	0	0	0	0	0	0	0	0	0
300 TO 399	0	0	0	0	0	0	0	0	0	0	0	0	0
400 TO 499	0	0	0	0	0	0	0	0	0	0	0	0	0
500 OR MORE	0	0	0	0	0	0	0	0	0	0	0	0	0
ARIZONA	0	3	4	0	14	0	1	2	8	2	0	36	0
LESS THAN 25	0	0	0	0	0	0	0	0	0	0	0	0	0
25 TO 49	0	0	0	0	0	0	0	0	1	0	0	1	0
50 TO 99	0	0	3	0	3	0	0	1	0	0	0	7	0
100 TO 199	0	1	2	0	7	0	0	1	2	0	0	13	0
200 TO 299	0	0	0	0	2	0	0	0	2	0	0	4	0
300 TO 399	0	0	0	0	2	0	0	0	2	0	0	4	0
400 TO 499	0	1	1	0	1	0	1	0	2	1	0	7	0
500 OR MORE	0	1	0	0	1	0	0	0	1	1	0	4	0

HOSPITAL-JUNIOR COLLEGE SURVEY, 1969
AMERICAN HOSPITAL ASSOCIATION

TABLE 4A. HEALTH OCCUPATIONS FOR WHICH JUNIOR COLLEGE STUDENTS ARE PREPARING IN HOSPITALS
UNITED STATES AND PUERTO RICO, BY HOSPITAL SIZE (BEDS)

HOSPITAL SIZE (BEDS)	OCCUPATIONS											TOTAL	NOT INDICATED			
	CST	ITF	MRT	MST	NSC	GFA	ORT	PTA	PVN	MRT	OTHER					
ARIZONA	0	0	0	0	6	0	0	0	0	3	0	0	0	0	9	0
LESS THAN 25	0	0	0	0	0	0	0	0	0	0	0	0	0	0	0	0
25 TO 49	0	0	0	0	1	0	0	0	0	0	0	0	0	0	1	0
50 TO 99	0	0	0	0	1	0	0	0	0	1	0	0	0	0	2	0
100 TO 199	0	0	0	0	2	0	0	0	1	1	0	0	0	0	3	0
200 TO 299	0	0	0	0	2	0	0	0	1	0	0	0	0	0	3	0
300 TO 399	0	0	0	0	0	0	0	0	0	0	0	0	0	0	0	0
400 TO 499	0	0	0	0	0	0	0	0	0	0	0	0	0	0	0	0
500 OR MORE	0	0	0	0	0	0	0	0	0	0	0	0	0	0	0	0
CALIFORNIA	4	21	15	2	149	2	12	4	158	55	31	453	0	0	453	0
LESS THAN 25	0	0	0	0	1	0	0	0	1	0	0	2	0	0	2	0
25 TO 49	2	2	1	1	5	1	2	1	16	3	3	37	0	0	37	0
50 TO 99	0	2	1	0	27	1	1	1	41	10	10	94	0	0	94	0
100 TO 199	1	3	5	0	54	0	3	1	45	13	7	132	0	0	132	0
200 TO 299	1	7	7	1	35	0	2	0	30	14	3	100	0	0	100	0
300 TO 399	0	0	1	0	11	0	2	1	13	5	3	36	0	0	36	0
400 TO 499	0	4	0	0	7	0	0	0	5	4	4	26	0	0	26	0
500 OR MORE	0	3	0	0	9	0	2	0	7	4	1	26	0	0	26	0
COLORADO	0	2	1	0	4	0	0	0	5	2	5	19	0	0	19	0
LESS THAN 25	0	0	0	0	0	0	0	0	0	0	0	0	0	0	0	0
25 TO 49	0	0	0	0	0	0	0	0	0	0	1	1	0	0	1	0
50 TO 99	0	0	0	0	0	0	0	0	1	0	1	2	0	0	2	0
100 TO 199	0	0	0	0	0	0	0	0	1	0	0	1	0	0	1	0
200 TO 299	0	0	1	0	2	0	0	0	2	0	2	7	0	0	7	0
300 TO 399	0	0	0	0	1	0	0	0	0	1	0	2	0	0	2	0
400 TO 499	0	1	0	0	1	0	0	0	1	1	1	5	0	0	5	0
500 OR MORE	0	1	0	0	1	0	0	0	1	1	1	5	0	0	5	0



HOSPITAL-JUNIOR COLLEGE SURVEY, 1969
AMERICAN HOSPITAL ASSOCIATION

TABLE 4A.- HEALTH OCCUPATIONS FOR WHICH JUNIOR COLLEGE STUDENTS ARE PREPARING IN HOSPITALS
UNITED STATES AND PUERTO RICO, BY HOSPITAL SIZE (BEDS)

HOSPITAL SIZE (BEDS)	OCCUPATIONS											TOTAL	NOT INDICATED
	CST	ITT	MPT	MMT	NSC	OTA	ORT	PTA	PVN	XRT	OTHER		
CONNECTICUT	0	3	1	0	3	1	2	0	1	2	6	19	0
LESS THAN 25	0	0	0	0	0	0	0	0	0	0	0	0	0
25 TO 49	0	0	0	0	0	0	0	0	0	0	0	0	0
50 TO 99	0	0	0	0	0	0	0	0	0	0	0	0	0
100 TO 199	0	0	0	0	0	0	0	0	0	0	2	2	0
200 TO 299	0	0	0	0	1	0	0	0	0	1	1	3	0
300 TO 399	0	1	0	0	1	0	0	0	0	0	1	3	0
400 TO 499	0	0	1	0	1	0	0	0	1	0	1	4	0
500 OR MORE	0	2	0	0	0	1	2	0	0	1	1	7	0
DELAWARE	0	0	0	0	2	0	0	0	0	0	1	3	0
LESS THAN 25	0	0	0	0	0	0	0	0	0	0	0	0	0
25 TO 49	0	0	0	0	0	0	0	0	0	0	0	0	0
50 TO 99	0	0	0	0	0	0	0	0	0	0	0	0	0
100 TO 199	0	0	0	0	1	0	0	0	0	0	0	1	0
200 TO 299	0	0	0	0	0	0	0	0	0	0	0	0	0
300 TO 399	0	0	0	0	0	0	0	0	0	0	0	0	0
400 TO 499	0	0	0	0	0	0	0	0	0	0	0	0	0
500 OR MORE	0	0	0	0	1	0	0	0	0	0	1	2	0
DIST. OF COLUMBIA	0	1	0	0	4	0	0	0	0	0	1	6	0
LESS THAN 25	0	0	0	0	0	0	0	0	0	0	0	0	0
25 TO 49	0	0	0	0	0	0	0	0	0	0	0	0	0
50 TO 99	0	0	0	0	0	0	0	0	0	0	0	0	0
100 TO 199	0	0	0	0	0	0	0	0	0	0	0	0	0
200 TO 299	0	0	0	0	0	0	0	0	0	0	0	0	0
300 TO 399	0	0	0	0	3	0	0	0	0	0	1	4	0
400 TO 499	0	0	0	0	0	0	0	0	0	0	0	0	0
500 OR MORE	0	1	0	0	1	0	0	0	0	0	0	2	0

HOSPITAL--JUNIOR COLLEGE SURVEY, 1969
AMERICAN HOSPITAL ASSOCIATION

TABLE 4A-- HEALTH OCCUPATIONS FOR WHICH JUNIOR COLLEGE STUDENTS ARE PREPARING IN HOSPITALS
UNITED STATES AND PUERTO RICO, BY HOSPITAL SIZE (BEDS)

HOSPITAL SIZE (BEDS)	OCCUPATIONS											TOTAL	NOT INDICATED
	CST	IFT	MRT	MNT	NSC	CTA	ORT	PTA	PVN	XRT	OTNER		
FLORIDA	2	10	12	2	48	1	10	4	17	8	12	126	0
LESS THAN 25	0	0	0	0	0	0	0	0	0	0	0	0	0
25 TO 49	0	0	0	0	2	0	0	0	1	0	0	0	0
50 TO 99	0	0	0	0	3	0	0	0	2	0	0	5	0
100 TO 199	2	1	5	1	13	1	3	2	5	1	3	37	0
200 TO 299	0	2	4	0	16	0	4	0	6	2	4	38	0
300 TO 399	0	3	1	1	5	0	1	1	2	2	2	18	0
400 TO 499	0	1	0	0	4	0	1	0	1	1	2	10	0
500 OR MORE	0	3	2	0	5	0	1	1	0	2	1	15	0
GEORGIA	0	0	0	0	13	0	0	0	1	1	1	16	0
LESS THAN 25	0	0	0	0	0	0	0	0	0	0	0	0	0
25 TO 49	0	0	0	0	0	0	0	0	0	0	0	0	0
50 TO 99	0	0	0	0	1	0	0	0	0	0	0	1	0
100 TO 199	0	0	0	0	5	0	0	0	1	0	0	6	0
200 TO 299	0	0	0	0	3	0	0	0	0	0	0	3	0
300 TO 399	0	0	0	0	3	0	0	0	0	1	1	5	0
400 TO 499	0	0	0	0	1	0	0	0	0	0	0	1	0
500 OR MORE	0	0	0	0	0	0	0	0	0	0	0	0	0
MASSACHUSETTS	0	0	0	0	3	0	0	0	4	0	0	7	0
LESS THAN 25	0	0	0	0	0	0	0	0	0	0	0	0	0
25 TO 49	0	0	0	0	0	0	0	0	0	0	0	0	0
50 TO 99	0	0	0	0	0	0	0	0	1	0	0	1	0
100 TO 199	0	0	0	0	1	0	0	0	1	0	0	2	0
200 TO 299	0	0	0	0	1	0	0	0	1	0	0	2	0
300 TO 399	0	0	0	0	0	0	0	0	0	0	0	0	0
400 TO 499	0	0	0	0	1	0	0	0	1	0	0	2	0
500 OR MORE	0	0	0	0	0	0	0	0	0	0	0	0	0

HOSPITAL-JUNIOR COLLEGE SURVEY, 1969
AMERICAN HOSPITAL ASSOCIATION

TABLE 4A. HEALTH OCCUPATIONS FOR WHICH JUNIOR COLLEGE STUDENTS ARE PREPARING IN HOSPITALS
UNITED STATES AND PUERTO RICO, BY HOSPITAL SIZE (BEDS)

HOSPITAL SIZE (BEDS)	OCCUPATIONS													TOTAL	NOT INDICATED
	CST	ITT	PMT	PMT	MSG	OTA	ORT	PTA	PVN	XRT	OTHER	TOTAL			
IDAHO	1	1	3	0	7	0	1	0	7	2	1	23	0		
LESS THAN 25	0	0	1	0	0	0	0	0	0	0	0	1	0		
25 TO 49	0	0	0	0	1	0	0	0	0	0	0	1	0		
50 TO 99	0	0	0	0	0	0	0	0	1	0	0	1	0		
100 TO 199	1	1	2	0	6	0	1	0	6	2	1	20	0		
200 TO 299	0	0	0	0	0	0	0	0	0	0	0	0	0		
300 TO 399	0	0	0	0	0	0	0	0	0	0	0	0	0		
400 TO 499	0	0	0	0	0	0	0	0	0	0	0	0	0		
500 OR MORE	0	0	0	0	0	0	0	0	0	0	0	0	0		
ILLINOIS	0	9	3	0	50	1	7	3	27	14	10	124	0		
LESS THAN 25	0	0	0	0	0	0	0	0	0	0	0	0	0		
25 TO 49	0	0	0	0	0	0	0	0	0	0	0	0	0		
50 TO 99	0	0	1	0	4	0	1	0	9	2	0	17	0		
100 TO 199	0	1	0	0	16	0	1	0	8	3	1	30	0		
200 TO 299	0	3	1	0	15	0	2	1	5	6	2	35	0		
300 TO 399	0	2	0	0	7	0	0	0	1	1	1	12	0		
400 TO 499	0	0	0	0	3	0	0	0	1	0	2	6	0		
500 OR MORE	0	3	1	0	5	1	3	2	3	2	4	24	0		
INDIANA	0	0	0	0	13	0	0	0	5	5	4	27	1		
LESS THAN 25	0	0	0	0	0	0	0	0	0	0	0	0	0		
25 TO 49	0	0	0	0	0	0	0	0	0	0	0	0	0		
50 TO 99	0	0	0	0	1	0	0	0	0	1	0	2	1		
100 TO 199	0	0	0	0	4	0	0	0	1	1	0	6	0		
200 TO 299	0	0	0	0	4	0	0	0	2	0	1	7	0		
300 TO 399	0	0	0	0	1	0	0	0	2	1	2	6	0		
400 TO 499	0	0	0	0	2	0	0	0	0	2	1	5	0		
500 OR MORE	0	0	0	0	1	0	0	0	0	0	0	1	0		

HOSPITAL-JUNIOR COLLEGE SURVEY, 1969
AMERICAN HOSPITAL ASSOCIATION

TABLE 4A- HEALTH OCCUPATIONS FOR WHICH JUNIOR COLLEGE STUDENTS ARE PREPARING IN HOSPITALS
UNITED STATES AND PUERTO RICO, BY HOSPITAL SIZE (BEDS)

HOSPITAL SIZE (BEDS)	OCCUPATIONS											TOTAL	NOT INDICATED
	CST	ITT	MRT	MMT	MSG	GTA	ORT	PTA	PVN	XRT	OTHER		
IDAHO	1	0	2	0	5	1	8	0	19	2	9	47	1
LESS THAN 25	0	0	0	0	0	0	0	0	0	0	0	0	0
25 TO 49	1	0	0	0	1	0	1	0	1	0	0	4	1
50 TO 99	0	0	0	0	2	0	0	0	3	0	1	6	0
100 TO 199	0	0	2	0	0	0	0	0	5	1	1	9	0
200 TO 299	0	0	0	0	1	0	4	0	6	0	5	16	0
300 TO 399	0	0	0	0	1	0	2	0	3	0	1	7	0
400 TO 499	0	0	0	0	0	1	0	0	0	0	1	2	0
500 OR MORE	0	0	0	0	0	0	1	0	1	1	0	3	0
KANSAS	0	1	3	0	9	1	0	1	4	3	4	26	1
LESS THAN 25	0	0	0	0	0	0	0	0	0	0	0	0	0
25 TO 49	0	0	1	0	0	0	0	0	0	0	0	1	0
50 TO 99	0	0	0	0	5	1	0	0	2	1	1	10	1
100 TO 199	0	1	2	0	2	0	0	1	2	2	3	13	0
200 TO 299	0	0	0	0	0	0	0	0	0	0	0	0	0
300 TO 399	0	0	0	0	0	0	0	0	0	0	0	0	0
400 TO 499	0	0	0	0	1	0	0	0	0	0	0	1	0
500 OR MORE	0	0	0	0	1	0	0	0	1	0	0	1	0
KENTUCKY	0	1	0	0	21	0	1	0	2	1	4	30	0
LESS THAN 25	0	0	0	0	0	0	0	0	0	0	0	0	0
25 TO 49	0	0	0	0	0	0	0	0	0	0	0	0	0
50 TO 99	0	0	0	0	3	0	1	0	0	0	0	4	0
100 TO 199	0	0	0	0	9	0	0	0	2	0	3	14	0
200 TO 299	0	0	0	0	4	0	0	0	0	0	0	4	0
300 TO 399	0	1	0	0	5	0	0	0	0	1	1	8	0
400 TO 499	0	0	0	0	0	0	0	0	0	0	0	0	0
500 OR MORE	0	0	0	0	0	0	0	0	0	0	0	0	0

HOSPITAL-JUNIOR COLLEGE SURVEY, 1969
AMERICAN HOSPITAL ASSOCIATION

TABLE 4A. HEALTH OCCUPATIONS FOR WHICH JUNIOR COLLEGE STUDENTS ARE PREPARING IN HOSPITALS
UNITED STATES AND PUERTO RICO, BY HOSPITAL SIZE (BEDS)

HOSPITAL SIZE (BEDS)	OCCUPATIONS													TOTAL	NOT INDICATED
	CST	FTT	MRT	MHT	NSC	OTA	ORT	PTA	PVN	XRT	OTHER				
LOUISIANA	0	1	0	0	1	0	0	0	1	3	2	1	13	0	
LESS THAN 25	0	0	0	0	0	0	0	0	0	0	0	0	0	0	
25 TO 49	0	0	0	0	0	0	0	0	0	0	0	0	0	0	
50 TO 99	0	0	0	0	1	0	0	0	2	1	1	0	4	0	
100 TO 199	0	0	0	0	2	0	0	0	1	0	0	0	3	0	
200 TO 299	0	0	0	0	1	0	0	0	0	0	0	1	1	0	
300 TO 399	0	1	0	0	1	0	0	1	0	1	1	1	5	0	
400 TO 499	0	0	0	0	0	0	0	0	0	0	0	0	0	0	
500 OR MORE	0	0	0	0	0	0	0	0	0	0	0	0	0	0	
MAINE	0	0	1	0	2	0	0	0	1	0	0	2	6	0	
LESS THAN 25	0	0	0	0	0	0	0	0	0	0	0	0	0	0	
25 TO 49	0	0	0	0	0	0	0	0	0	0	0	0	0	0	
50 TO 99	0	0	1	0	1	0	0	0	1	0	0	1	4	0	
100 TO 199	0	0	0	0	0	0	0	0	0	0	0	0	0	0	
200 TO 299	0	0	0	0	0	0	0	0	0	0	0	1	1	0	
300 TO 399	0	0	0	0	1	0	0	0	0	0	0	0	1	0	
400 TO 499	0	0	0	0	0	0	0	0	0	0	0	0	0	0	
500 OR MORE	0	0	0	0	0	0	0	0	0	0	0	0	0	0	
MASSACHUSETTS	0	2	3	0	13	0	0	1	0	0	3	3	25	0	
LESS THAN 25	0	0	0	0	0	0	0	0	0	0	0	0	0	0	
25 TO 49	0	0	0	0	0	0	0	0	0	0	0	0	0	0	
50 TO 99	0	0	1	0	0	0	0	0	0	0	1	0	2	0	
100 TO 199	0	0	0	0	3	0	0	0	0	0	0	1	4	0	
200 TO 299	0	0	0	0	4	0	0	0	0	0	0	0	4	0	
300 TO 399	0	0	0	0	3	0	0	1	0	0	1	1	6	0	
400 TO 499	0	2	1	0	1	0	0	0	0	0	1	1	9	0	
500 OR MORE	0	0	1	0	2	0	0	0	0	0	0	0	3	0	

HOSPITAL-JUNIOR COLLEGE SURVEY, 1969
AMERICAN HOSPITAL ASSOCIATION

TABLE 4A- HEALTH OCCUPATIONS FOR WHICH JUNIOR COLLEGE STUDENTS ARE PREPARING IN HOSPITALS
UNITED STATES AND PUERTO RICO, BY HOSPITAL SIZE (BEDS)

HOSPITAL SIZE (BEDS)	OCCUPATIONS											TOTAL	NOT INDICATED	
	CST	ITE	MRT	MNT	NSG	DTA	ORT	PTA	PVN	XRT	OTHER			
MASSACHUSETTS	0	3	5	1	31	1	5	7	7	7	10	7	77	0
LESS THAN 25	0	0	0	0	0	0	0	0	0	0	0	0	0	0
25 TO 49	0	0	1	0	0	0	0	0	0	0	0	0	1	0
50 TO 99	0	0	1	0	5	0	1	0	1	0	0	0	8	0
100 TO 199	0	0	1	1	10	0	0	1	2	3	3	3	21	0
200 TO 299	0	0	1	0	7	0	2	2	2	2	2	0	16	0
300 TO 399	0	3	1	0	6	0	2	3	2	4	4	1	22	0
400 TO 499	0	0	0	0	1	0	0	1	0	0	0	2	4	0
500 OR MORE	0	0	0	0	2	1	0	0	0	1	1	1	5	0
MICHIGAN	0	6	3	1	36	1	2	0	40	18	18	18	125	0
LESS THAN 25	0	0	0	0	0	0	0	0	0	0	0	0	0	0
25 TO 49	0	0	0	0	0	0	0	0	1	0	0	0	1	0
50 TO 99	0	0	0	0	1	1	0	0	6	0	0	1	9	0
100 TO 199	0	2	0	1	10	0	1	0	19	6	10	10	49	0
200 TO 299	0	1	2	0	9	0	1	0	5	8	4	4	30	0
300 TO 399	0	0	0	0	7	0	0	0	5	0	1	1	13	0
400 TO 499	0	0	0	0	5	0	0	0	2	1	0	0	8	0
500 OR MORE	0	3	1	0	4	0	0	0	2	3	2	2	15	0
MINNESOTA	0	3	3	1	14	7	0	8	6	2	7	7	51	1
LESS THAN 25	0	0	0	0	0	0	0	0	0	0	0	0	0	0
25 TO 49	0	0	0	0	1	0	0	0	0	0	0	0	3	1
50 TO 99	0	0	0	0	1	0	0	0	1	0	0	0	2	0
100 TO 199	0	0	0	0	1	0	0	0	3	0	2	2	6	0
200 TO 299	0	0	0	0	2	2	0	2	0	0	0	0	6	0
300 TO 399	0	0	1	0	4	2	0	3	1	0	1	1	12	0
400 TO 499	0	2	1	1	2	2	0	2	1	1	1	1	13	0
500 OR MORE	0	1	1	0	3	1	0	1	0	1	1	1	9	0

HOSPITAL-JUNIOR COLLEGE SURVEY, 1969
AMERICAN HOSPITAL ASSOCIATION

TABLE 4A. HEALTH OCCUPATIONS FOR WHICH JUNIOR COLLEGE STUDENTS ARE PREPARING IN HOSPITALS
UNITED STATES AND PUERTO RICO, BY HOSPITAL SIZE (BEDS)

HOSPITAL SIZE (BEDS)	OCCUPATIONS													TOTAL	NOT INDICATED
	CST	ITT	MRT	MHT	NSC	OTA	ORT	PTA	PVN	XRT	OTHER				
MISSISSIPPI	0	2	0	0	20	0	3	0	18	5	5	53	0		
LESS THAN 25	0	0	0	0	1	0	0	0	0	0	0	1	0		
25 TO 49	0	0	0	0	0	0	0	0	1	0	1	2	0		
50 TO 99	0	0	0	0	3	0	0	0	4	0	2	9	0		
100 TO 199	0	1	0	0	12	0	0	0	9	3	1	26	0		
200 TO 299	0	0	0	0	2	0	1	0	2	1	0	6	0		
300 TO 399	0	1	0	0	2	0	2	0	2	1	1	9	0		
400 TO 499	0	0	0	0	0	0	0	0	0	0	0	0	0		
500 OR MORE	0	0	0	0	0	0	0	0	0	0	0	0	0		
MISSOURI	0	5	1	0	23	0	1	3	8	5	8	54	0		
LESS THAN 25	0	0	0	0	0	0	0	0	0	0	0	0	0		
25 TO 49	0	1	0	0	2	0	1	1	1	0	1	7	0		
50 TO 99	0	0	1	0	2	0	0	0	3	0	3	9	0		
100 TO 199	0	0	0	0	5	0	0	1	3	0	1	10	0		
200 TO 299	0	0	0	0	4	0	0	1	0	1	1	7	0		
300 TO 399	0	3	0	0	4	0	0	0	0	3	2	12	0		
400 TO 499	0	0	0	0	0	0	0	0	0	0	0	0	0		
500 OR MORE	0	1	0	0	6	0	0	0	1	1	0	9	0		
UTAH	0	0	0	0	4	0	0	0	1	0	0	5	0		
LESS THAN 25	0	0	0	0	0	0	0	0	0	0	0	0	0		
25 TO 49	0	0	0	0	1	0	0	0	0	0	0	1	0		
50 TO 99	0	0	0	0	0	0	0	0	0	0	0	0	0		
100 TO 199	0	0	0	0	2	0	0	0	1	0	0	3	0		
200 TO 299	0	0	0	0	1	0	0	0	0	0	0	1	0		
300 TO 399	0	0	0	0	0	0	0	0	0	0	0	0	0		
400 TO 499	0	0	0	0	0	0	0	0	0	0	0	0	0		
500 OR MORE	0	0	0	0	0	0	0	0	0	0	0	0	0		

HOSPITAL-JUNIOR COLLEGE SURVEY, 1969
AMERICAN HOSPITAL ASSOCIATION

TABLE 4A. HEALTH OCCUPATIONS FOR WHICH JUNIOR COLLEGE STUDENTS ARE PREPARING IN HOSPITALS
UNITED STATES AND PUERTO RICO, BY HOSPITAL SIZE (BEDS)

HOSPITAL SIZE (BEDS)	OCCUPATIONS											TOTAL	NOT INDICATED	
	CST	ITT	MRT	MHT	NSG	OTA	ORT	PTA	PVN	XRT	OTHER			
NEBRASKA	0	1	0	0	1	0	0	1	1	1	0	2	6	0
LESS THAN 25	0	0	0	0	0	0	0	0	0	0	0	0	0	0
25 TO 49	0	0	0	0	0	0	0	0	0	0	0	0	0	0
50 TO 99	0	1	0	0	1	0	0	1	0	0	0	1	4	0
100 TO 199	0	0	0	0	0	0	0	0	1	0	0	1	2	0
200 TO 299	0	0	0	0	0	0	0	0	0	0	0	0	0	0
300 TO 399	0	0	0	0	0	0	0	0	0	0	0	0	0	0
400 TO 499	0	0	0	0	0	0	0	0	0	0	0	0	0	0
500 OR MORE	0	0	0	0	0	0	0	0	0	0	0	0	0	0
NEVADA	0	0	0	0	0	0	0	0	0	0	0	0	0	0
LESS THAN 25	0	0	0	0	0	0	0	0	0	0	0	0	0	0
25 TO 49	0	0	0	0	0	0	0	0	0	0	0	0	0	0
50 TO 99	0	0	0	0	0	0	0	0	0	0	0	0	0	0
100 TO 199	0	0	0	0	0	0	0	0	0	0	0	0	0	0
200 TO 299	0	0	0	0	0	0	0	0	0	0	0	0	0	0
300 TO 399	0	0	0	0	0	0	0	0	0	0	0	0	0	0
400 TO 499	0	0	0	0	0	0	0	0	0	0	0	0	0	0
500 OR MORE	0	0	0	0	0	0	0	0	0	0	0	0	0	0
NEW HAMPSHIRE	0	0	1	0	0	0	0	0	1	0	0	2	4	0
25 TO 49	0	0	0	0	0	0	0	0	0	0	0	0	0	0
50 TO 99	0	0	0	0	0	0	0	0	1	0	2	3	0	0
100 TO 199	0	0	0	0	0	0	0	0	0	0	0	0	0	0
200 TO 299	0	0	0	0	0	0	0	0	0	0	0	0	0	0
300 TO 399	0	0	1	0	0	0	0	0	0	0	0	0	1	0
400 TO 499	0	0	0	0	0	0	0	0	0	0	0	0	0	0
500 OR MORE	0	0	0	0	0	0	0	0	0	0	0	0	0	0

HOSPITAL-JUNIOR COLLEGE SURVEY, 1969
 AMERICAN HOSPITAL ASSOCIATION
 TABLE 4A. HEALTH OCCUPATIONS FOR WHICH JUNIOR COLLEGE STUDENTS ARE PREPARING IN HOSPITALS
 UNITED STATES AND PUERTO RICO, BY HOSPITAL SIZE (BEDS)

HOSPITAL SIZE (BEDS)	OCCUPATIONS											TOTAL	NOT INDICATED
	CST	ITT	MRT	MHT	NSG	DTA	CRT	PTA	PVN	XRT	CTHER		
NEW JERSEY	1	3	4	0	31	0	1	1	2	2	6	51	0
LESS THAN 25	0	0	0	0	0	0	0	0	0	0	0	0	0
25 TO 49	0	0	0	0	0	0	0	0	0	0	0	0	0
50 TO 99	0	0	0	0	1	0	0	0	0	0	1	2	0
100 TO 199	0	1	1	0	11	0	0	0	1	0	1	15	0
200 TO 299	1	1	2	0	7	0	1	1	1	1	2	17	0
300 TO 399	0	0	0	0	7	0	0	0	0	0	0	7	0
400 TO 499	0	1	1	0	4	0	0	0	0	1	2	9	0
500 OR MORE	0	0	0	0	1	0	0	0	0	0	0	1	0
NEW MEXICO	0	0	0	0	3	0	0	0	0	0	4	11	0
LESS THAN 25	0	0	0	0	0	0	0	0	1	0	0	1	0
25 TO 49	0	0	0	0	0	0	0	0	1	0	0	1	0
50 TO 99	0	0	0	0	0	0	0	0	1	0	2	3	0
100 TO 199	0	0	0	0	2	0	0	0	1	0	1	4	0
200 TO 299	0	0	0	0	1	0	0	0	0	0	1	2	0
300 TO 399	0	0	0	0	0	0	0	0	0	0	0	0	0
400 TO 499	0	0	0	0	0	0	0	0	0	0	0	0	0
500 OR MORE	0	0	0	0	0	0	0	0	0	0	0	0	0
NEW YORK	0	9	19	0	95	1	4	4	16	30	31	209	2
LESS THAN 25	0	0	0	0	0	0	0	0	0	0	0	0	0
25 TO 49	0	0	0	0	1	0	0	0	0	1	0	2	0
50 TO 99	0	0	1	0	8	0	0	0	3	3	8	23	0
100 TO 199	0	2	7	0	31	1	2	2	2	4	6	57	1
200 TO 299	0	0	2	0	23	0	2	2	3	8	7	45	1
300 TO 399	0	4	4	0	18	0	0	0	4	5	4	39	0
400 TO 499	0	1	3	0	7	0	1	0	1	6	3	22	0
500 OR MORE	0	2	2	0	7	0	1	0	3	3	3	21	0

HOSPITAL-JUNIOR COLLEGE SURVEY, 1969
AMERICAN HOSPITAL ASSOCIATION

TABLE 4A. HEALTH OCCUPATIONS FOR WHICH JUNIOR COLLEGE STUDENTS ARE PREPARING IN HOSPITALS
UNITED STATES AND PUERTO RICO, BY HOSPITAL SIZE (BEDS)

HOSPITAL SIZE (BEDS)	OCCUPATIONS											TOTAL	NOT INDICATED
	CST	ITT	MRT	MHY	NSG	DTA	ORT	PTA	PVN	ART	OTHER		
NORTH CAROLINA	0	0	1	0	14	0	0	1	11	1	6	34	0
LESS THAN 25	0	0	0	0	0	0	0	0	0	0	0	0	0
25 TO 49	0	0	0	0	0	0	0	0	0	0	0	0	0
50 TO 99	0	0	0	0	1	0	0	0	2	0	1	4	0
100 TO 199	0	0	0	0	5	0	0	0	7	1	3	16	0
200 TO 299	0	0	0	0	5	0	0	0	1	0	1	7	0
300 TO 399	0	0	0	0	1	0	0	0	0	0	0	1	0
400 TO 499	0	0	0	0	1	0	0	0	0	0	0	1	0
500 OR MORE	0	0	1	0	1	0	0	1	1	0	1	5	0
NORTH DAKOTA	0	0	0	0	2	0	0	0	1	0	0	3	0
LESS THAN 25	0	0	0	0	0	0	0	0	0	0	0	0	0
25 TO 49	0	0	0	0	0	0	0	0	0	0	0	0	0
50 TO 99	0	0	0	0	0	0	0	0	1	0	0	1	0
100 TO 199	0	0	0	0	2	0	0	0	0	0	0	2	0
200 TO 299	0	0	0	0	0	0	0	0	0	0	0	0	0
300 TO 399	0	0	0	0	0	0	0	0	0	0	0	0	0
400 TO 499	0	0	0	0	0	0	0	0	0	0	0	0	0
500 OR MORE	0	0	0	0	0	0	0	0	0	0	0	0	0
OHIO	0	1	1	0	24	1	2	0	4	6	7	46	2
LESS THAN 25	0	0	0	0	0	0	0	0	0	0	0	0	0
25 TO 49	0	0	0	0	0	0	0	0	0	0	0	0	0
50 TO 99	0	0	0	0	4	0	0	0	0	0	0	4	0
100 TO 199	0	0	0	0	3	0	0	0	0	2	0	5	1
200 TO 299	0	0	0	0	6	0	1	0	2	1	2	12	0
300 TO 399	0	0	0	0	5	0	1	0	1	1	3	11	0
400 TO 499	0	1	1	0	4	0	0	0	0	1	2	9	0
500 OR MORE	0	0	0	0	2	1	0	0	1	1	0	5	1

HOSPITAL-JUNIOR COLLEGE SURVEY, 1969
AMERICAN HOSPITAL ASSOCIATION

TABLE 4A. HEALTH OCCUPATIONS FOR WHICH JUNIOR COLLEGE STUDENTS ARE PREPARING IN HOSPITALS
UNITED STATES AND PUERTO RICO, BY HOSPITAL SIZE (BEDS)

HOSPITAL SIZE (BEDS)	OCCUPATIONS													TOTAL	NOT INDICATED		
	CST	ITT	MRT	MHT	NSG	OTA	ORT	PTA	PVN	XRT	OTHER						
OKLAHOMA	0	0	0	0	2	0	0	0	0	0	0	0	0	0	3	6	2
LESS THAN 25	0	0	0	0	0	0	0	0	0	0	0	0	0	0	0	0	0
25 TO 49	0	0	0	0	0	0	0	0	0	0	0	0	0	0	3	4	1
50 TO 99	0	0	0	0	0	0	0	0	0	0	0	0	0	0	0	0	1
100 TO 199	0	0	0	0	1	0	0	0	0	0	0	0	0	0	0	1	0
200 TO 299	0	0	0	0	1	0	0	0	0	0	0	0	0	0	0	1	0
300 TO 399	0	0	0	0	0	0	0	0	0	0	0	0	0	0	0	0	0
400 TO 499	0	0	0	0	0	0	0	0	0	0	0	0	0	0	0	0	0
500 OR MORE	0	0	0	0	0	0	0	0	0	0	0	0	0	0	0	0	0
OREGON	0	2	5	1	16	1	0	0	0	15	3	6	49	0	0	0	0
LESS THAN 25	0	0	0	0	0	0	0	0	0	0	0	0	0	0	0	0	0
25 TO 49	0	0	0	1	1	0	0	0	0	1	0	2	5	0	0	0	0
50 TO 99	0	1	1	0	5	0	0	0	0	6	1	2	16	0	0	0	0
100 TO 199	0	0	1	0	7	0	0	0	0	5	1	2	16	0	0	0	0
200 TO 299	0	0	1	0	0	0	0	0	0	0	0	0	1	0	0	0	0
300 TO 399	0	1	1	0	3	0	0	0	0	1	0	0	6	0	0	0	0
400 TO 499	0	0	1	0	0	1	0	0	0	1	1	0	4	0	0	0	0
500 OR MORE	0	0	0	0	0	0	0	0	0	1	0	0	1	0	0	0	0
PENNSYLVANIA	0	1	7	1	14	0	4	0	0	5	1	10	43	1	0	0	0
LESS THAN 25	0	0	0	0	0	0	0	0	0	0	0	0	0	0	0	0	0
25 TO 49	0	0	0	0	0	0	0	0	0	0	0	0	0	0	0	0	0
50 TO 99	0	0	0	0	0	0	0	0	0	0	1	0	1	0	0	0	0
100 TO 199	0	0	1	0	3	0	0	0	0	1	0	0	5	1	0	0	0
200 TO 299	0	0	3	0	4	0	2	0	0	2	0	3	14	0	0	0	0
300 TO 399	0	0	0	0	0	0	0	0	0	0	0	0	0	0	0	0	0
400 TO 499	0	0	0	0	4	0	0	0	0	0	0	2	6	0	0	0	0
500 OR MORE	0	1	3	1	3	0	2	0	0	2	0	5	17	0	0	0	0

HOSPITAL-JUNIOR COLLEGE SURVEY, 1969
AMERICAN HOSPITAL ASSOCIATION

TABLE 4A. HEALTH OCCUPATIONS FOR WHICH JUNIOR COLLEGE STUDENTS ARE PREPARING IN HOSPITALS
UNITED STATES AND PUERTO RICO, BY HOSPITAL SIZE (BEDS)

HOSPITAL SIZE (BEDS)	OCCUPATIONS													TOTAL	NOT INDICATED
	CST	ITT	MRT	MNT	NSG	OTA	ORT	PTA	PVN	XRT	OTHER				
RHODE ISLAND	0	0	1	0	3	0	0	0	0	2	2	4	12	0	
LESS THAN 25	0	0	0	0	0	0	0	0	0	0	0	0	0	0	
25 TO 49	0	0	0	0	0	0	0	0	0	0	0	0	0	0	
50 TO 99	0	0	0	0	0	0	0	0	0	0	0	0	0	0	
100 TO 199	0	0	0	0	0	0	0	0	0	0	0	1	1	0	
200 TO 299	0	0	1	0	2	0	0	0	2	0	2	2	9	0	
300 TO 399	0	0	0	0	0	0	0	0	0	0	0	0	0	0	
400 TO 499	0	0	0	0	0	0	0	0	0	0	0	0	0	0	
500 OR MORE	0	0	0	0	1	0	0	0	0	0	0	1	2	0	
SOUTH CAROLINA	1	3	2	2	4	1	2	2	1	1	2	1	21	0	
LESS THAN 25	0	0	0	0	0	0	0	0	0	0	0	0	0	0	
25 TO 49	0	0	0	0	0	0	0	0	0	0	0	0	0	0	
50 TO 99	0	0	0	0	0	0	0	0	0	0	0	0	0	0	
100 TO 199	0	0	0	0	0	0	0	0	0	0	0	0	0	0	
200 TO 299	0	0	0	0	0	0	0	0	0	0	0	0	0	0	
300 TO 399	0	1	0	0	2	0	0	0	0	0	0	0	3	0	
400 TO 499	1	1	1	1	2	1	1	1	1	1	1	0	11	0	
500 OR MORE	0	1	1	1	3	0	1	1	0	0	1	1	7	0	
SOUTH DAKOTA	0	0	1	0	1	0	0	0	0	0	0	1	3	0	
LESS THAN 25	0	0	0	0	0	0	0	0	0	0	0	0	0	0	
25 TO 49	0	0	0	0	0	0	0	0	0	0	0	0	0	0	
50 TO 99	0	0	0	0	0	0	0	0	0	0	0	0	0	0	
100 TO 199	0	0	0	0	0	0	0	0	0	0	0	0	0	0	
200 TO 299	0	0	1	0	1	0	0	0	0	0	0	1	3	0	
300 TO 399	0	0	0	0	0	0	0	0	0	0	0	0	0	0	
400 TO 499	0	0	0	0	0	0	0	0	0	0	0	0	0	0	
500 OR MORE	0	0	0	0	0	0	0	0	0	0	0	0	0	0	

HOSPITAL-JUNIOR COLLEGE SURVEY, 1969
AMERICAN HOSPITAL ASSOCIATION

TABLE 4A. HEALTH OCCUPATIONS FOR WHICH JUNIOR COLLEGE STUDENTS ARE PREPARING IN HOSPITALS
UNITED STATES AND PUERTO RICO, BY HOSPITAL SIZE (BEDS)

HOSPITAL SIZE (BEDS)	OCCUPATIONS											TOTAL	NOT INDICATED
	CST	ITT	MRT	MHT	NSG	OTA	ORT	PTA	PVN	XRT	OTHER		
TENNESSEE	0	0	0	0	1	0	0	0	3	1	1	6	1
LESS THAN 25	0	0	0	0	0	0	0	0	0	0	0	0	0
25 TO 49	0	0	0	0	0	0	0	0	0	0	0	0	0
50 TO 99	0	0	0	0	0	0	0	0	1	0	0	1	0
100 TO 199	0	0	0	0	0	0	0	0	0	0	0	0	0
200 TO 299	0	0	0	0	0	0	0	1	0	0	0	1	0
300 TO 399	0	0	0	0	1	0	0	0	1	1	1	4	0
400 TO 499	0	0	0	0	0	0	0	0	0	0	0	0	0
500 OR MORE	0	0	0	0	0	0	0	0	0	0	0	0	0
TEXAS	8	15	8	1	59	3	8	3	43	14	14	176	0
LESS THAN 25	0	0	0	0	1	0	0	0	1	1	0	3	0
25 TO 49	0	0	0	0	5	0	1	0	9	0	1	16	0
50 TO 99	1	1	0	0	12	1	1	1	13	0	3	33	0
100 TO 199	2	2	3	0	18	0	1	0	8	3	1	38	0
200 TO 299	0	3	3	0	8	1	0	0	4	3	4	26	0
300 TO 399	1	2	1	0	3	0	2	0	2	2	2	15	0
400 TO 499	2	2	1	0	5	0	1	1	2	2	0	16	0
500 OR MORE	2	5	0	1	7	1	2	1	4	3	3	29	0
UTAH	0	0	0	0	1	0	0	0	3	1	1	6	1
LESS THAN 25	0	0	0	0	0	0	0	0	0	0	0	0	0
25 TO 49	0	0	0	0	0	0	0	0	0	0	0	0	0
50 TO 99	0	0	0	0	0	0	0	0	1	0	0	1	0
100 TO 199	0	0	0	0	0	0	0	0	0	0	0	0	0
200 TO 299	0	0	0	0	0	0	0	0	1	0	0	1	0
300 TO 399	0	0	0	0	1	0	0	0	1	1	1	4	0
400 TO 499	0	0	0	0	0	0	0	0	0	0	0	0	0
500 OR MORE	0	0	0	0	0	0	0	0	0	0	0	0	0

HOSPITAL-JUNIOR COLLEGE SURVEY, 1969
AMERICAN HOSPITAL ASSOCIATION

TABLE 4A. HEALTH OCCUPATIONS FOR WHICH JUNIOR COLLEGE STUDENTS ARE PREPARING IN HOSPITALS
UNITED STATES AND PUERTO RICO, BY HOSPITAL SIZE (BEDS)

HOSPITAL SIZE (BEDS)	OCCUPATIONS											TOTAL	NOT INDICATED		
	GST	ITT	MRT	MHY	MSG	DTA	ORT	PTA	PVN	XRT	OTHER				
VERMONT	0	0	0	0	2	0	0	0	0	0	0	0	0	2	0
LESS THAN 25	0	0	0	0	0	0	0	0	0	0	0	0	0	0	0
25 TO 49	0	0	0	0	0	0	0	0	0	0	0	0	0	0	0
50 TO 99	0	0	0	0	0	0	0	0	0	0	0	0	0	0	0
100 TO 199	0	0	0	0	1	0	0	0	0	0	0	0	0	1	0
200 TO 299	0	0	0	0	1	0	0	0	0	0	0	0	0	1	0
300 TO 399	0	0	0	0	0	0	0	0	0	0	0	0	0	0	0
400 TO 499	0	0	0	0	0	0	0	0	0	0	0	0	0	0	0
500 OR MORE	0	0	0	0	0	0	0	0	0	0	0	0	0	0	0
VIRGINIA	0	0	1	0	9	0	0	0	2	3	1	16	0	0	0
LESS THAN 25	0	0	0	0	0	0	0	0	0	0	0	0	0	0	0
25 TO 49	0	0	0	0	0	0	0	0	1	0	0	1	0	0	0
50 TO 99	0	0	0	0	0	0	0	0	0	0	0	0	0	0	0
100 TO 199	0	0	1	0	3	0	0	0	0	2	0	6	0	0	0
200 TO 299	0	0	0	0	1	0	0	0	0	1	0	3	0	0	0
300 TO 399	0	0	0	0	3	0	0	0	1	0	0	4	0	0	0
400 TO 499	0	0	0	0	1	0	0	0	0	0	0	1	0	0	0
500 OR MORE	0	0	0	0	1	0	0	0	0	0	0	1	0	0	0
WASHINGTON	2	7	9	0	27	0	1	0	27	7	11	91	0	0	0
LESS THAN 25	0	0	0	0	1	0	0	0	0	0	1	2	0	0	0
25 TO 49	0	0	0	0	4	0	0	0	0	0	0	4	0	0	0
50 TO 99	2	1	1	0	9	0	1	0	11	1	4	30	0	0	0
100 TO 199	0	2	4	0	8	0	0	0	11	2	2	29	0	0	0
200 TO 299	0	1	1	0	3	0	0	0	3	3	2	13	0	0	0
300 TO 399	0	2	2	0	2	0	0	0	0	0	1	7	0	0	0
400 TO 499	0	1	1	0	0	0	0	0	2	1	1	6	0	0	0
500 OR MORE	0	0	0	0	0	0	0	0	0	0	0	0	0	0	0

HOSPITAL-JUNIOR COLLEGE SURVEY, 1969
AMERICAN HOSPITAL ASSOCIATION

TABLE 4A. HEALTH OCCUPATIONS FOR WHICH JUNIOR COLLEGE STUDENTS ARE PREPARING IN HOSPITALS
UNITED STATES AND PUERTO RICO, BY HOSPITAL SIZE (PEOS)

40

HOSPITAL SIZE (BEDS)	OCCUPATIONS											TOTAL	NOT INDICATED	
	CST	ITT	MRT	MHT	NSC	OTA	ORT	PTA	PVN	XRT	OTHER			
WEST VIRGINIA	0	0	1	0	7	0	0	0	0	3	0	1	12	0
LESS THAN 25	0	0	0	0	0	0	0	0	0	0	0	0	0	0
25 TO 49	0	0	0	0	0	0	0	0	0	0	0	0	0	0
50 TO 99	0	0	0	0	1	0	0	0	1	0	0	1	3	0
100 TO 199	0	0	1	0	0	0	0	0	0	0	0	0	1	0
200 TO 299	0	0	0	0	4	0	0	0	2	0	0	0	6	0
300 TO 399	0	0	0	0	1	0	0	0	0	0	0	0	1	0
400 TO 499	0	0	0	0	1	0	0	0	0	0	0	0	1	0
500 OR MORE	0	0	0	0	0	0	0	0	0	0	0	0	0	0
WISCONSIN	0	1	0	0	4	1	1	1	7	2	4	21	0	0
LESS THAN 25	0	0	0	0	0	0	0	0	0	0	0	0	0	0
25 TO 49	0	0	0	0	0	0	0	0	0	0	0	0	0	0
50 TO 99	0	0	0	0	0	0	0	0	0	0	1	1	0	0
100 TO 199	0	0	0	0	0	0	0	0	0	0	1	1	0	0
200 TO 299	0	0	0	0	1	0	0	1	2	2	0	0	6	0
300 TO 399	0	1	0	0	2	0	1	0	2	0	1	7	0	0
400 TO 499	0	0	0	0	1	1	0	0	2	0	1	5	0	0
500 OR MORE	0	0	0	0	0	0	0	0	1	0	0	1	0	0
WYOMING	0	0	1	0	1	0	1	0	2	1	1	7	0	0
LESS THAN 25	0	0	0	0	0	0	0	0	0	0	0	0	0	0
25 TO 49	0	0	0	0	0	0	0	0	0	0	0	0	0	0
50 TO 99	0	0	1	0	0	0	0	0	1	0	0	2	0	0
100 TO 199	0	0	0	0	0	0	1	0	1	1	1	4	0	0
200 TO 299	0	0	0	0	0	0	0	0	0	0	0	0	0	0
300 TO 399	0	0	0	0	1	0	0	0	0	0	0	1	0	0
400 TO 499	0	0	0	0	0	0	0	0	0	0	0	0	0	0
500 OR MORE	0	0	0	0	0	0	0	0	0	0	0	0	0	0

HOSPITAL-JUNIOR COLLEGE SURVEY, 1969
AMERICAN HOSPITAL ASSOCIATION

TABLE 4A. HEALTH OCCUPATIONS FOR WHICH JUNIOR COLLEGE STUDENTS ARE PREPARING IN HOSPITALS
UNITED STATES AND PUERTO RICO, BY HOSPITAL SIZE (BEDS)

HOSPITAL SIZE (BEDS)	OCCUPATIONS											TOTAL	NOT INDICATED	
	CST	ITT	MRT	MHT	NSG	OTA	ORT	PTA	PVN	XRT	OTHER			
PUERTO RICO	0	0	2	0	10	0	1	0	3	2	0	0	18	0
LESS THAN 25	0	0	0	0	0	0	0	0	0	0	0	0	0	0
25 TO 49	0	0	0	0	0	0	0	0	0	0	0	0	0	0
50 TO 99	0	0	0	0	3	0	0	0	0	0	0	0	3	0
100 TO 199	0	0	0	0	3	0	0	0	1	1	0	0	5	0
200 TO 299	0	0	1	0	2	0	1	0	1	1	0	0	6	0
300 TO 399	0	0	1	0	1	0	0	0	1	0	0	0	3	0
400 TO 499	0	0	0	0	0	0	0	0	0	0	0	0	0	0
500 OR MORE	0	0	0	0	1	0	0	0	0	0	0	0	1	0

HOSPITAL-JUNIOR COLLEGE SURVEY, 1969
AMERICAN HOSPITAL ASSOCIATION

TABLE 48. HEALTH OCCUPATIONS FOR WHICH JUNIOR COLLEGE STUDENTS ARE PREPARING IN HOSPITALS
UNITED STATES AND PUERTO RICO, BY HOSPITAL SIZE

	HOSPITAL SIZE (BEDS)										TOTAL #
	LESS THAN 25	25 TO 49	50 TO 99	100 TO 199	200 TO 299	300 TO 399	400 TO 499	500 AND OVER			
CENTRAL SUPPLY TECHNOLOGY	0	15.0	15.0	30.0	10.0	5.0	15.0	10.0	20		
INHALATION THERAPY TECHNOLOGY	0	2.5	5.1	15.3	15.3	22.0	15.3	24.6	118		
MEDICAL RECORD TECHNOLOGY	.8	2.3	9.9	30.5	24.4	12.2	9.9	9.9	131		
MENTAL HEALTH TECHNOLOGY	0	15.4	0	30.8	7.7	7.7	15.4	23.1	13		
NURSING	.5	3.0	13.0	31.7	22.0	14.3	7.4	8.1	854		
OCCUPATIONAL THERAPY ASSISTING	0	4.2	16.7	8.3	12.5	8.3	25.0	25.0	24		42
OPERATING ROOM TECHNOLOGY	0	6.3	7.6	16.5	26.6	17.7	6.3	19.0	79		
PHYSICAL THERAPY ASSISTING	0	4.3	8.7	19.6	21.7	19.6	10.9	15.2	46		
PRATICAL OR VOCATIONAL NURSING	.6	6.7	24.2	31.3	17.3	9.5	4.8	5.6	504		
X-RAY OR RADIOLOGICAL TECHNOLOGY	.4	2.2	9.6	24.1	25.4	15.4	11.8	11.0	228		
OTHERS	.4	5.2	17.9	23.9	18.7	13.8	10.1	10.1	268		

HOSPITAL-JUNIOR COLLEGE SURVEY, 1969
AMERICAN HOSPITAL ASSOCIATION

TABLE 4C. HEALTH OCCUPATIONS FOR WHICH JUNIOR COLLEGE STUDENTS ARE PREPARING IN HOSPITALS
UNITED STATES AND PUERTO RICO

HOSPITAL SIZE (BEDS)	CST		IIT		MRT		OCCUPATIONS		MHT		NSG		CTA	
	#	%	#	%	#	%	#	%	#	%	#	%	#	%
LESS THAN 25	0	0	0	0	1	10.0	0	0	0	0	4	40.0	0	0
25 TO 49	3	3.1	3	3.1	3	3.1	2	2.0	2	2.0	26	26.5	1	1.0
50 TO 99	3	.9	6	1.8	13	3.8	0	0	0	0	111	32.7	4	1.2
100 TO 199	6	.9	18	2.8	40	6.3	4	.6	4	.6	271	42.3	2	.3
200 TO 299	2	.4	18	3.8	32	6.8	1	.2	1	.2	188	40.0	3	.6
300 TO 399	1	.3	26	8.4	16	5.1	1	.3	1	.3	122	39.2	2	.6
400 TO 499	3	1.6	18	9.3	13	6.7	2	1.0	2	1.0	63	32.6	6	3.1
500 OR MORE	2	.9	29	12.9	13	5.8	3	1.3	3	1.3	69	30.8	6	2.7
TOTAL	20	.9	118	5.2	131	5.7	13	.6	13	.6	854	37.4	24	1.1

HOSPITAL-JUNIOR COLLEGE SURVEY, 1969
 AMERICAN HOSPITAL ASSOCIATION

TABLE 4C. HEALTH OCCUPATIONS FOR WHICH JUNIOR COLLEGE STUDENTS ARE PREPARING IN HOSPITALS
 UNITED STATES AND PUERTO RICO

	ORT		PTA		PVN		KRT		OTHER		TOTAL #
	#	%	#	%	#	%	#	%	#	%	
LESS THAN 25	0	0	0	0	3	30.0	1	10.0	1	10.0	10
25 TO 49	5	5.1	2	2.0	34	34.7	5	5.1	14	14.3	98
50 TO 99	6	1.8	4	1.2	122	36.0	22	6.5	48	14.2	339
100 TO 199	13	2.0	9	1.4	158	24.7	55	8.6	64	10.0	640
200 TO 299	21	4.5	10	2.1	87	18.5	58	12.3	50	10.6	470
300 TO 399	14	4.5	9	2.9	48	15.4	35	11.3	37	11.9	311
400 TO 499	5	2.6	5	2.6	24	12.4	27	14.0	27	14.0	193
500 OR MORE	15	6.7	7	3.1	28	12.5	25	11.2	27	12.1	224
TOTAL	79	3.5	46	2.0	504	22.1	228	10.0	268	11.7	2,785

44

HOSPITAL-JUNIOR COLLEGE SURVEY, 1969
 AMERICAN HOSPITAL ASSOCIATION

TABLE 5. NUMBER OF HEALTH OCCUPATIONS FOR WHICH JUNIOR COLLEGE STUDENTS ARE PREPARING IN A GIVEN HOSPITAL

HOSPITAL SIZE (BEDS)	NUMBER OF OCCUPATIONS PER HOSPITAL AND PERCENT OF TOTAL HOSPITALS												TOTAL HOSPITALS #	NOT INDICATED #
	ONE		TWO		THREE		FOUR		FIVE OR MORE		TOTAL HOSPITALS #			
	#	%	#	%	#	%	#	%	#	%				
LESS THAN 25	6	75.0	2	25.0	0	0	0	0	0	0	8	0	0	
25 TO 49	54	78.3	9	13.0	2	2.9	2	2.9	2	2.9	69	4	4	
50 TO 99	166	70.3	50	21.2	13	5.5	4	1.7	3	1.3	236	3	3	
100 TO 199	227	58.5	103	26.5	37	9.5	15	3.9	6	1.5	388	3	3	
200 TO 299	170	49.0	62	25.3	39	15.9	16	6.5	8	3.3	245	1	1	
300 TO 399	77	47.5	48	29.6	21	13.0	12	7.4	4	2.5	162	0	0	
400 TO 499	37	45.1	16	19.5	10	12.2	10	12.2	9	11.0	82	0	0	
500 OR MORE	39	39.4	30	30.3	11	11.1	12	12.1	7	7.1	95	1	1	
TOTAL	726	56.3	320	24.8	133	10.3	71	5.5	39	3.0	1,289	12	12	

HOSPITAL-JUNIOR COLLEGE SURVEY, 1969
 AMERICAN HOSPITAL ASSOCIATION

TABLE 5A. HEALTH OCCUPATIONS FOR WHICH JUNIOR COLLEGE STUDENTS ARE PREPARING IN A GIVEN HOSPITAL

NUMBER OF OCCUPATIONS	LESS THAN 25	25 TO 49	50 TO 99	HOSPITAL SIZE (BEDS)					TOTAL
				100 TO 199	200 TO 299	300 TO 399	400 TO 499	500 AND OVER	
ONE	.8	7.4	22.9	31.3	16.5	10.6	5.1	5.4	726
TWO	.6	2.8	15.6	32.2	19.4	15.0	5.0	9.4	320
THREE	0	1.5	9.8	27.8	29.3	15.8	7.5	8.3	133
FOUR	0	2.8	5.6	21.1	22.5	16.9	14.1	16.9	71
FIVE OR MORE	0	5.1	7.7	15.4	20.5	10.3	23.1	17.9	39
NO RESPONSE	0	33.3	25.0	25.0	8.3	0	0	8.3	12
TOTAL	.6	5.6	18.4	30.1	18.9	12.5	6.3	7.7	1,201

47

American Hospital Association

840 NORTH LAKE SHORE DRIVE · CHICAGO, ILLINOIS 60611

TELEPHONE 312 645-9400 / CABLE ADDRESS: AMHOSP

February 1969

TO: Administrators

SUBJECT: Hospital-Junior College Questionnaire

We would appreciate your prompt response to the brief questionnaire on the reverse side of this letter. Your answers will help us identify the extent to which hospitals are currently working with local junior and community colleges by providing their clinical facilities for the education and training of students for health service occupations.

On completing the questionnaire, please return the original, white copy in the enclosed business reply envelope. Your prompt reply will be appreciated. Two extra copies of the letter/questionnaire are enclosed: one for your files and one which you may wish to forward to your state hospital association. When the return data have been tabulated, they will be shared with the state association office.

Edwin L. Crosby, M.D.
Director

HOSPITAL-JUNIOR COLLEGE QUESTIONNAIRE

Instruction: Please check appropriate response; disregard code numbers.

A. HOSPITAL IDENTIFICATION

B. Is your hospital used for the clinical education of junior college students?

1 Yes

2 No

C. If the answer to B above is "yes", when did the hospital first provide its facilities or patients for junior college student education?

3 Within the past 2 years

4 Over 2 years ago, but less than 5

5 Over 5 years ago, but less than 10

6 10 or more years ago

D. If the answer to B above is "yes", please check those occupations for which the junior college students are preparing:

10 Central Supply Technology

Others - Please list below

11 Inhalation Therapy Technology

20 _____

12 Medical Record Technology

20 _____

13 Mental Health Technology

20 _____

14 Nursing

20 _____

15 Occupational Therapy Assisting

20 _____

16 Operating Room Technology

17 Physical Therapy Assisting

18 Practical or Vocational Nursing

19 Xray or Radiological Technology

ADMINISTRATOR'S SIGNATURE _____

Please return original, white copy to the American Hospital Association, 840 North Lake Shore Drive, Chicago, Illinois 60611.